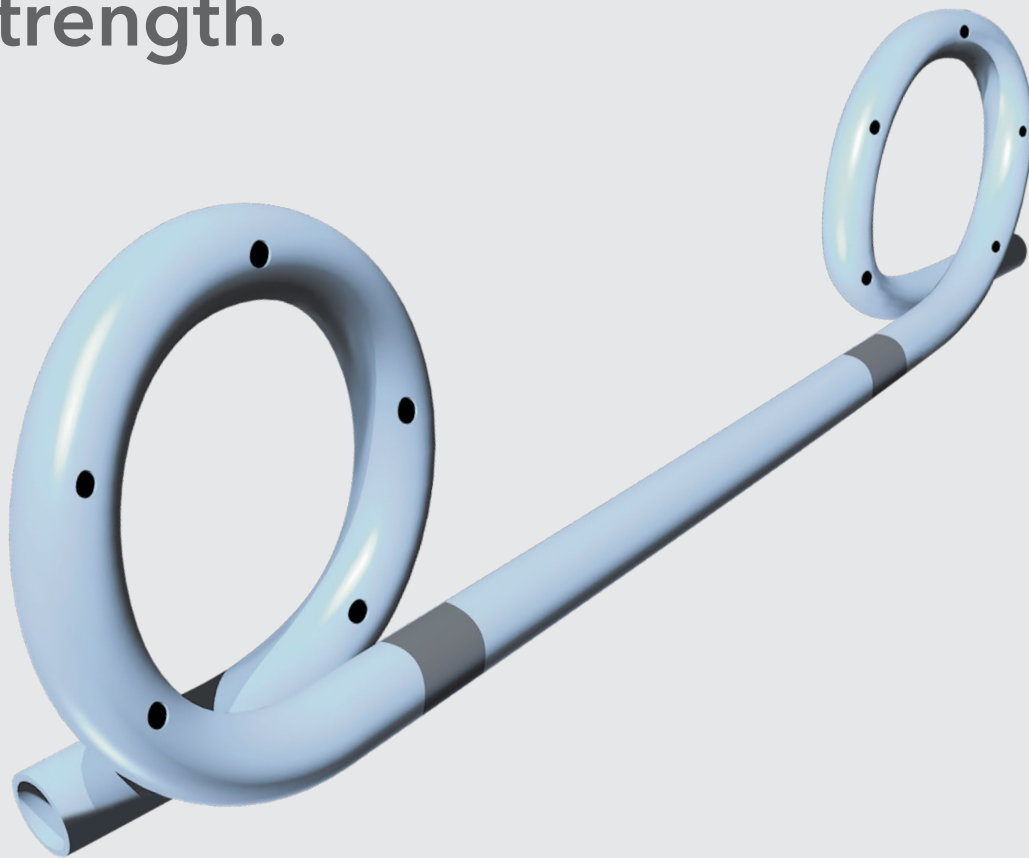


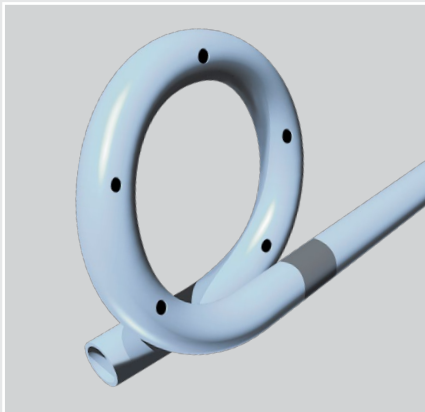
Stent with flexibility and strength.



Solus[®]

DOUBLE PIGTAIL STENT WITH INTRODUCER

Supple yet strong and completely radiopaque, the Solus Double Pigtail Stent provides a non-traditional solution for biliary drainage. When your procedure calls for reliable flexibility and strength, choose the Solus.



Solus®

DOUBLE PIGTAIL STENT WITH INTRODUCER

Used to drain obstructed biliary ducts.

- Sof-Flex® is a “soft” pliable radiopaque material that enhances fluoroscopic visibility
- Radiopaque markers enhance fluoroscopic visualization to facilitate proper positioning
- Double pigtail configuration designed to minimize migration
- Multiple side holes for efficient drainage
- Packaged with one-step introducer to simplify inventory management and enhance procedural efficiency

Order Number	Reference Part Number	Stent Fr	Stent Length cm	Introducer Fr	Introducer Length cm	Wire Guide* Diameter inch	Color Connection
G26829	ZSS-10-1-RB	10	1	10	210	.035	Purple
G25670	ZSS-10-3-RB	10	3	10	210	.035	Purple
G25671	ZSS-10-4-RB	10	4	10	210	.035	Purple
G25672	ZSS-10-5-RB	10	5	10	210	.035	Purple
G25673	ZSS-10-7-RB	10	7	10	210	.035	Purple
G25674	ZSS-10-9-RB	10	9	10	210	.035	Purple
G25685	ZSS-10-10-RB	10	10	10	210	.035	Purple
G25675	ZSS-10-12-RB	10	12	10	210	.035	Purple
G25676	ZSS-10-15-RB	10	15	10	210	.035	Purple

Set Includes: 10 Fr radiopaque stent, 10 Fr/165 cm pushing catheter, 5 Fr/210 cm guiding catheter, pigtail straightener (if applicable).

*Recommend Tracer Metro Direct .035 inch wire guide, sold separately. Length measured from base to base of pigtails.

Some products or part numbers may not be available in all markets. Contact your local Cook representative or Customer Service for details.

Customer Service

EU Website: cookmedical.eu
 EDI: cookmedical.eu/edi
 Distributors: +353 61239240, ssc.distributors@cookmedical.com
 Austria: +43 179567121, oe.orders@cookmedical.com
 Belgium: +32 27001633, be.orders@cookmedical.com
 Denmark: +45 38487607, da.orders@cookmedical.com
 Finland: +358 972519996, fi.orders@cookmedical.com
 France: +33 171230269, fr.orders@cookmedical.com
 Germany: +49 6950072804, de.orders@cookmedical.com
 Hungary: +36 17779199, hu.orders@cookmedical.com
 Ireland: +353 61239252, ie.orders@cookmedical.com
 Italy: +39 0269682853, it.orders@cookmedical.com
 Netherlands: +31 202013367, nl.orders@cookmedical.com
 Norway: +47 23162968, no.orders@cookmedical.com
 Spain: +34 912702691, es.orders@cookmedical.com
 Sweden: +46 858769468, se.orders@cookmedical.com
 Switzerland - French: +41 448009609, fr.orders@cookmedical.com
 Switzerland - Italian: +41 448009609, it.orders@cookmedical.com
 Switzerland - German: +41 448009609, de.orders@cookmedical.com
 United Kingdom: +44 2073654183, uk.orders@cookmedical.com

USA Website: cookmedical.com

EDI: cookmedical.com/edi.do

Americas:

Phone: +1 812.339.2235, 800.457.4500, Fax: 800.554.8335

E-mail: orders@cookmedical.com

Australia:

Phone: +61 734346000, 1800777222, Fax: +61 734346001, 1800077283

E-mail: cau.custserv@cookmedical.com



AI, ESC, IR, OHNS, PI, RH, SUR-A4