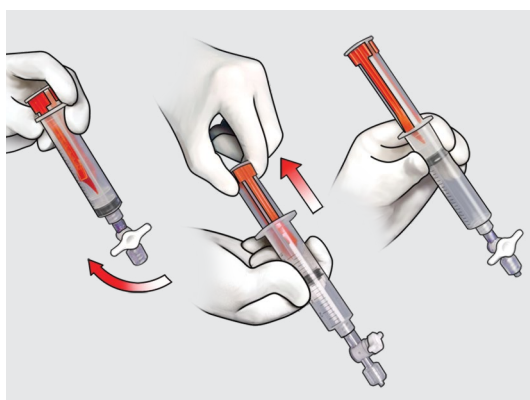


EchoTip ProCore[®]

ENDOBONCHIAL HD ULTRASOUND BIOPSY NEEDLE

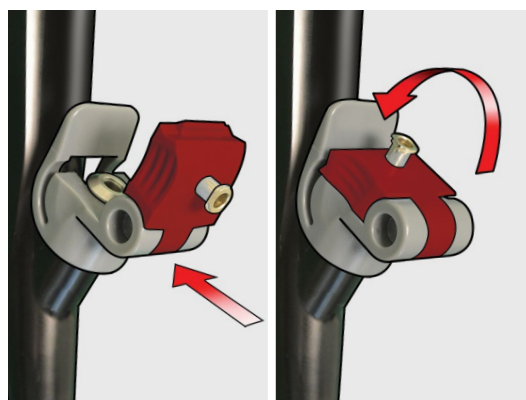
System Prep 1



OPTIONAL - If using the syringe for biopsy

To prepare the syringe, begin with the stopcock in the open position, depress the plunger locks and fully advance the plunger into the syringe. Turn the stopcock to the closed position and pull the plunger back to the desired setting, creating a vacuum.

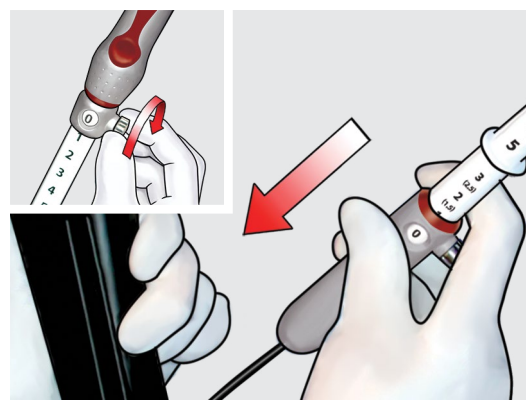
System Prep 2



OLYMPUS USERS ONLY

Slide the adapter, in the open position, in line with the accessory channel of the scope, ensuring that the base of the adapter slides under the accessory channel metal hub. Close the adapter, ensuring it is locked.

Step 1



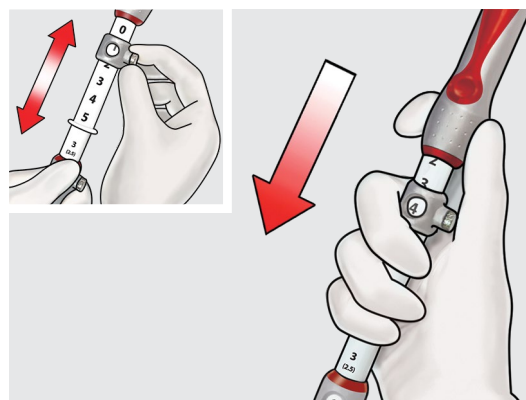
Identify the desired target site. Ensure the needle is retracted into the sheath before inserting it into the scope. Advance the device into the scope until the fittings meet. Attach the device to the accessory channel port by rotating the handle clockwise.

Step 2



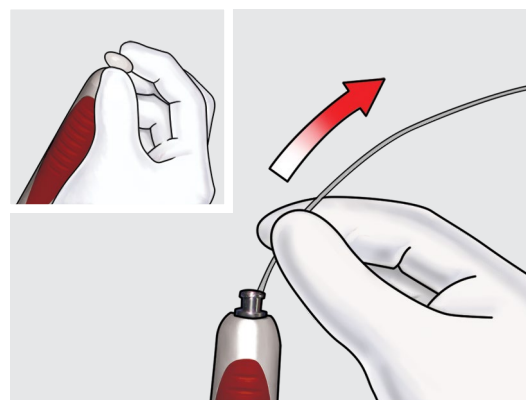
Adjust the sheath to the desired length by loosening the thumbscrew on the sliding sheath adjuster and slide until the preferred length is attained, then tighten the thumbscrew, ensuring the sheath has emerged from the working channel of the scope.

Step 3



Set the needle extension to the desired length by loosening the thumbscrew on the safety ring, and advance until the desired reference mark appears in the window, then tighten the thumbscrew. Advance the needle into the target site.

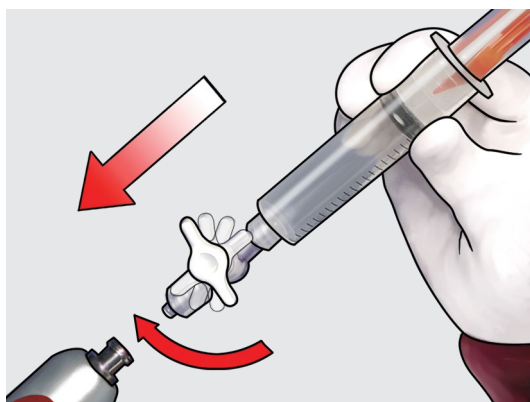
Step 4



Standard vacuum syringe techniques may be applied for biopsy or, if desired, other techniques that may or may not incorporate the use of the stylet may be used.

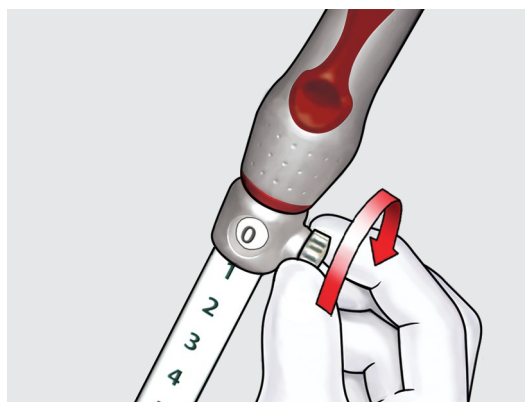
Remove the stylet by gently pulling back on the stylet hub. Preserve the stylet if an additional biopsy is required later. If using a syringe, follow Step 4.5.

Step 4.5



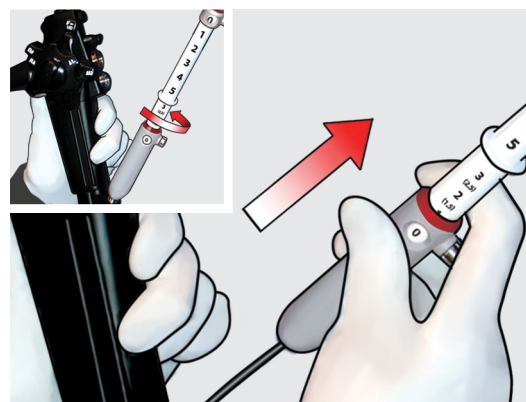
Attach the syringe to the device and open the stopcock to facilitate biopsy. Move the needle handle back and forth within the biopsy site. Upon completion of the biopsy, turn the stopcock to the closed position.

Step 5



Retract the needle completely into the sheath and lock the thumbscrew on the safety ring at the 0 cm mark.

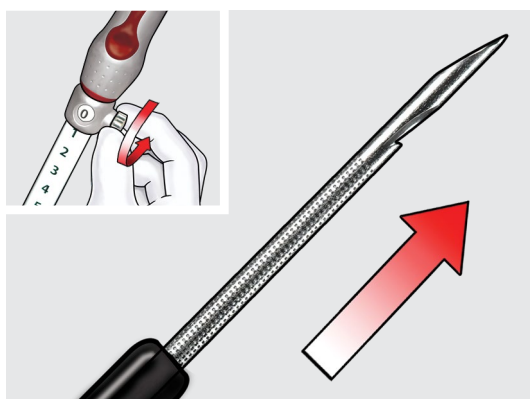
Step 6



Disconnect the needle from the accessory channel port by rotating the handle anticlockwise and withdraw the entire device from the scope.

Pentax users have an additional option for removing the needle between passes; refer to the Instructions for Use for further details.

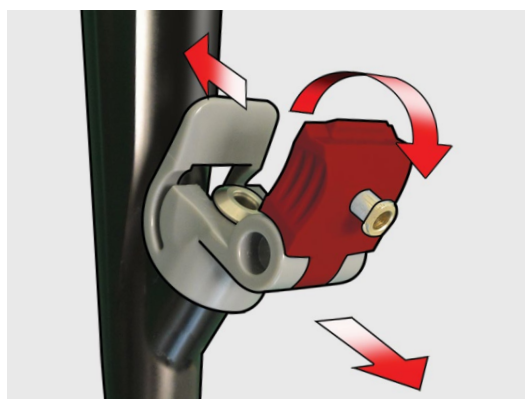
Step 7



Unlock the thumbscrew on the safety ring and extend the needle. Use a new syringe or the stylet to expel the specimen, then prepare per institutional guidelines.

Additional samples may be obtained by repeating steps 1-7.

Step 8



OLYMPUS USERS ONLY

To remove the adapter from the scope upon completion of the procedure, push back on the grey locking clip, lift the top, and slide the adapter off the scope.

Refer to current Instructions for Use for detailed information.

Please see product risk information in the IFU at cookmedical.eu.

Customer Service

EU Website: cookmedical.eu
 EDI: cookmedical.eu/edi
 Distributors: +353 61239240, ssc.distributors@cookmedical.com
 Austria: +43 179567121, oe.orders@cookmedical.com
 Belgium: +32 27001702, be.orders@cookmedical.com
 Denmark: +45 38487607, da.orders@cookmedical.com
 Finland: +358 972519996, fi.orders@cookmedical.com
 France: +33 171230269, fr.orders@cookmedical.com
 Germany: +49 6950072804, de.orders@cookmedical.com
 Hungary: +36 17779199, hu.orders@cookmedical.com
 Iceland: +354 8007615, IS.orders@cookmedical.com
 Ireland: +353 61239252, ie.orders@cookmedical.com
 Italy: +39 0269682853, it.orders@cookmedical.com
 Netherlands: +31 202013367, nl.orders@cookmedical.com
 Norway: +47 23162968, no.orders@cookmedical.com
 Spain: +34 912702691, es.orders@cookmedical.com
 Sweden: +46 858769468, se.orders@cookmedical.com
 Switzerland - French: +41 448009609, fr.orders@cookmedical.com
 Switzerland - Italian: +41 448009609, it.orders@cookmedical.com
 Switzerland - German: +41 448009609, de.orders@cookmedical.com
 United Kingdom: +44 2073654183, uk.orders@cookmedical.com

USA Website: cookmedical.com
 EDI: cookmedical.com/edi.do
Americas:
 Phone: +1 812.339.2235, 800.457.4500, Fax: 800.554.8335
 E-mail: orders@cookmedical.com
Australia:
 Phone: +61 734346000, 1800777222, Fax: +61 734346001, 1800077283
 E-mail: cau.custserv@cookmedical.com



AI, ESC, IR, OHNS, PI, RH, SUR-8.5X11