

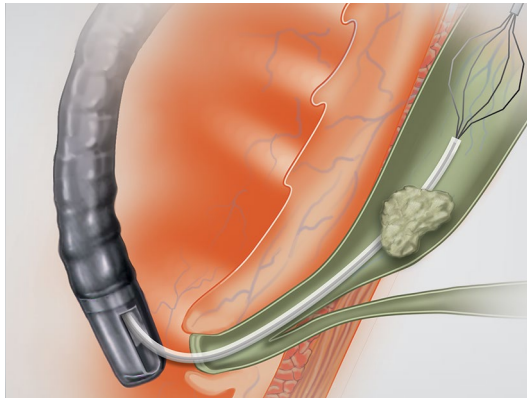
Conquest TTC™

LITHOTRIPTOR CABLE

Important

Prior to mechanical lithotripsy, refer to current instructions for detailed system use. Also refer to Cook product labels to confirm compatibility of baskets and minimum accessory channel. **Wire cutters must be available for this procedure.**

Step 1



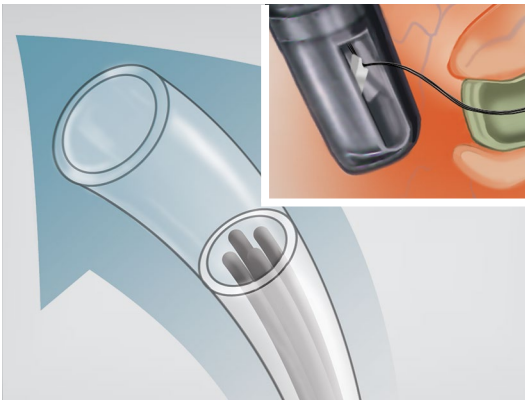
Fluoroscopically confirm stone entrapment with basket.

Step 2



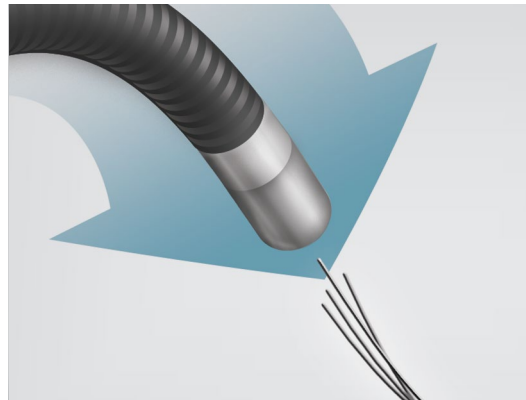
Once the stone is completely captured in the basket, make a complete cut using wire cutters, at the junction of the 10 FR and 7 FR sheath.

Step 3



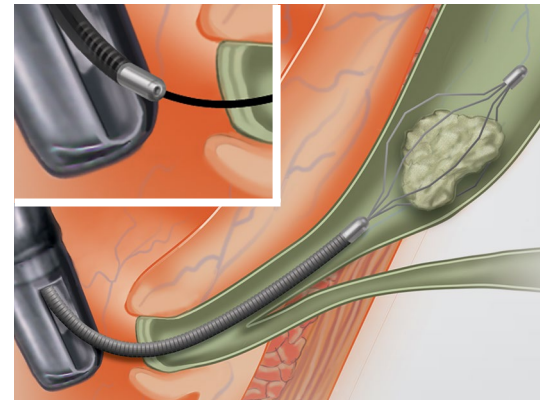
Remove the outer sheath of the basket slowly. As the distal tip of the sheath clears the endoscope elevator, gently lift the elevator to lock the basket wires in place. Then, continue removing the outer sheath. Dispose of the outer sheath.

Step 4



Introduce the lithotripsy cable over the basket wires and through the channel until the wires exit the proximal end of the cable. Grasp the basket wires exiting the cable.

Step 5



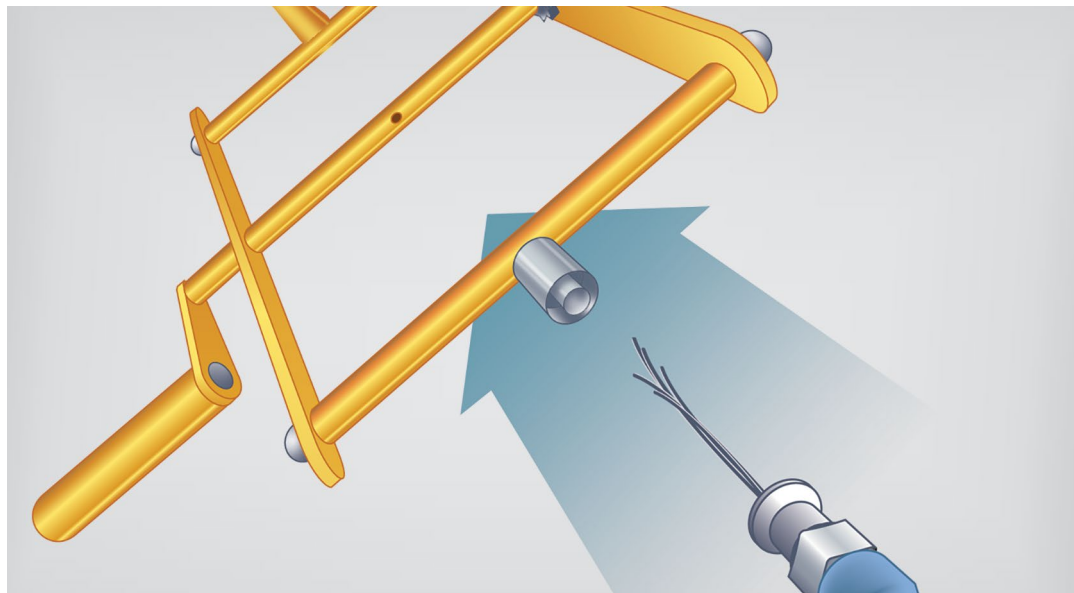
Release the elevator and continue to advance the cable until the distal tip reaches the basket within the duct. If additional contrast is necessary, refer to step 6 to attach Tuohy-Borst adapter.

Step 6



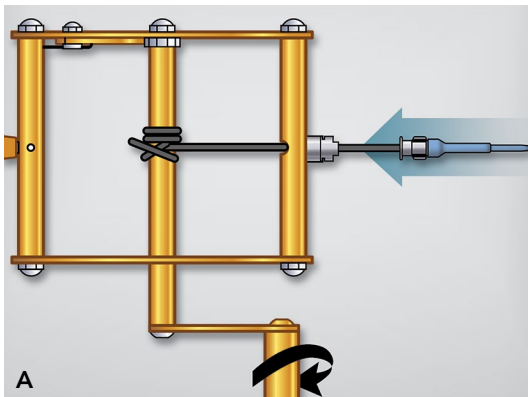
To attach adapter, insert basket wires through male Luer lock of the Tuohy-Borst. Continue to slide adapter over basket wires until male Luer lock engages female Luer lock of cable. Tighten the male Luer lock to prevent leakage during injection. Tighten female Luer lock to prevent back flow during injection. Tuohy-Borst adapter need not be attached if additional contrast is not required for procedure.

Step 7

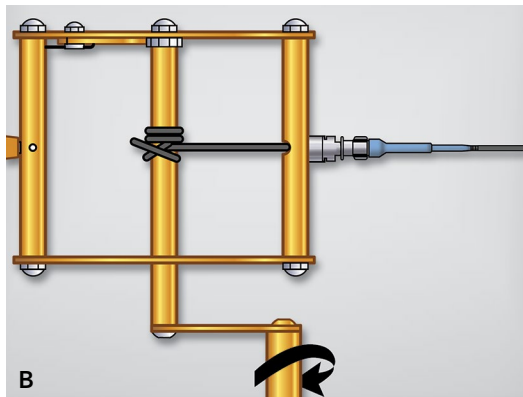


Pass the basket wires through the male Luer lock on the lithotripsy handle; and through the rotating rod opening of the handle.

Step 8



A. Connect the male Luer lock of the lithotripsy handle to the female Luer lock of the adapter (if applicable). Wrap the basket wires around the rotating rod to secure.

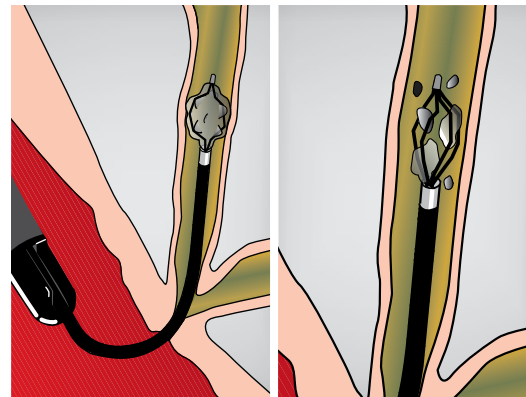


B. Apply steady pressure by rotating the handle slowly. Sudden release of pressure may indicate fracture of the stone, fracture of the basket, or loss of the stone from the basket.

Warning: If basket fragmentation should occur, surgical intervention may be necessary.

Note: The handle will only move in one direction unless the ratchet is released.

Step 9



After the stone has been fractured, assess the need to remove the fractured stone from the duct. Release the ratchet on the handle and remove the basket.

Refer to current instructions for detailed system use.

Customer Service

EU Website: cookmedical.eu
EDI: cookmedical.eu/edi
Distributors: +353 61239240, ssc.distributors@cookmedical.com
Austria: +43 179567121, oe.orders@cookmedical.com
Belgium: +32 27001702, be.orders@cookmedical.com
Denmark: +45 38487607, da.orders@cookmedical.com
Finland: +358 972519996, fi.orders@cookmedical.com
France: +33 171230269, fr.orders@cookmedical.com
Germany: +49 6950072804, de.orders@cookmedical.com
Hungary: +36 17779199, hu.orders@cookmedical.com
Iceland: +354 8007615, IS.orders@cookmedical.com
Ireland: +353 61239252, ie.orders@cookmedical.com
Italy: +39 0269682853, it.orders@cookmedical.com
Netherlands: +31 202013367, nl.orders@cookmedical.com
Norway: +47 23162968, no.orders@cookmedical.com
Spain: +34 912702691, es.orders@cookmedical.com
Sweden: +46 858769468, se.orders@cookmedical.com
Switzerland - French: +41 448009609, fr.orders@cookmedical.com
Switzerland - Italian: +41 448009609, it.orders@cookmedical.com
Switzerland - German: +41 448009609, de.orders@cookmedical.com
United Kingdom: +44 2073654183, uk.orders@cookmedical.com

USA Website: cookmedical.com
EDI: cookmedical.com/edi.do
Americas:
Phone: +1 812.339.2235, 800.457.4500, Fax: 800.554.8335
E-mail: customersupport@cookmedical.com
Australia:
Phone: +61 734346000, 1800777222, Fax: +61 734346001, 1800077283
E-mail: cau.custserv@cookmedical.com



AI, ESC, IR, OHNS, PI, RH, SUR-8.5X11