

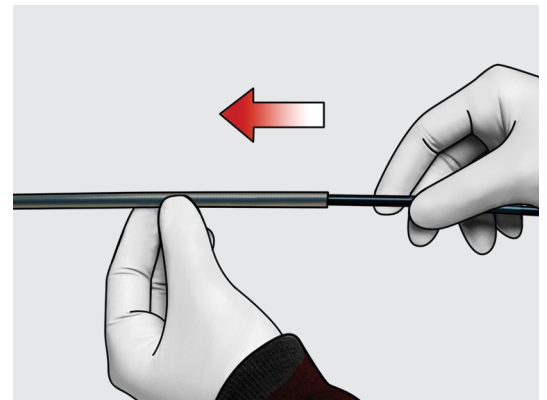
# Evolution<sup>®</sup> Colonic

CONTROLLED-RELEASE STENT - UNCOVERED

## Features

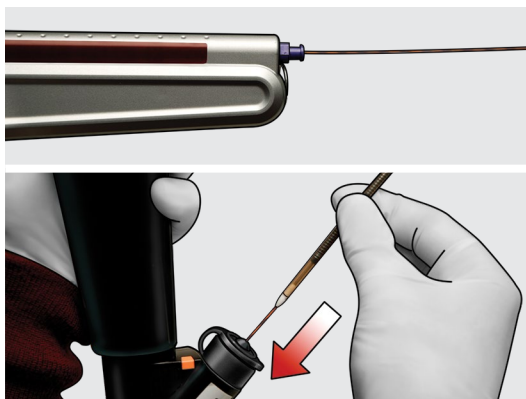


## Step 1



Remove protective tubing from stent.

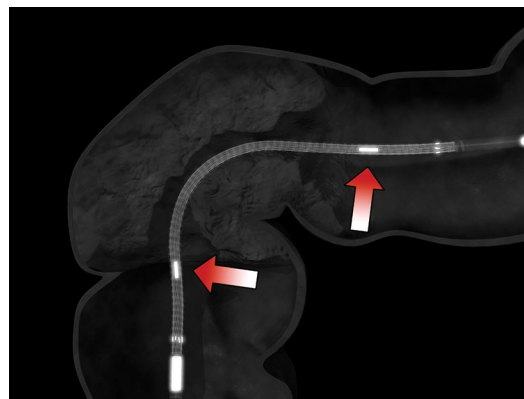
## Step 2



Introduce delivery system in short increments over wire guide, into accessory channel, until it is endoscopically visualized exiting scope.

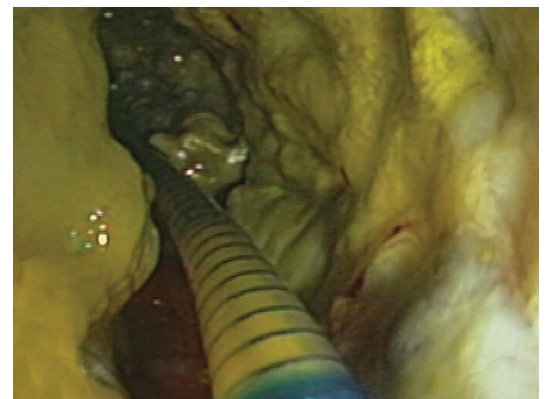
**Note:** Minimum accessory channel 3.7 mm

## Step 3a



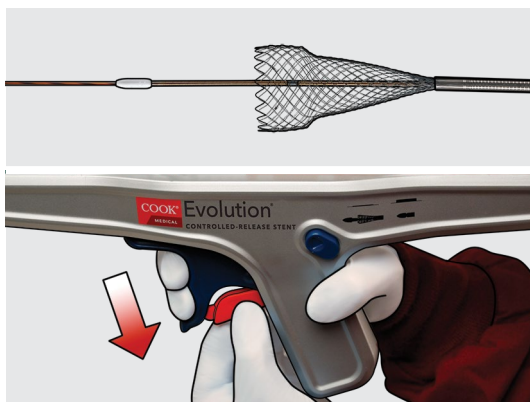
Fluoroscopically position radiopaque markers on inner catheter beyond extremities of stricture to be crossed.

## Step 3b



**Note:** Yellow marker on the delivery system located at proximal end of stent can also serve as an endoscopic/fluoroscopic reference for positioning of the proximal (nearest user) end of the stent relative to the stricture.

## Step 4



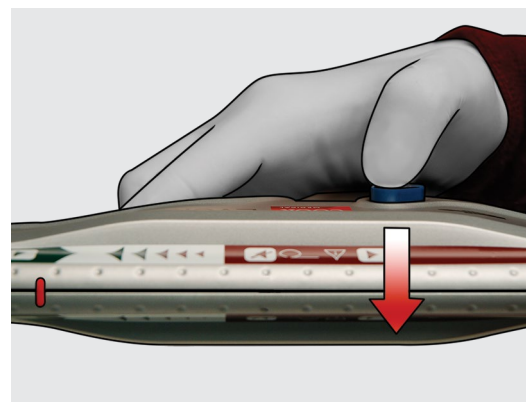
Confirm desired stent position fluoroscopically and deploy stent by removing red safety guard from handle. Continue deploying stent by squeezing trigger.

## Step 5a



If repositioning is required during deployment, it is possible to recapture stent. **Note:** It is not possible to recapture stent after passing point-of-no-return, indicated when the stent deployment indicator on top of introducer has passed point-of-no-return indicator on handle. The stent can be captured a maximum of 5 times.

## Step 5b



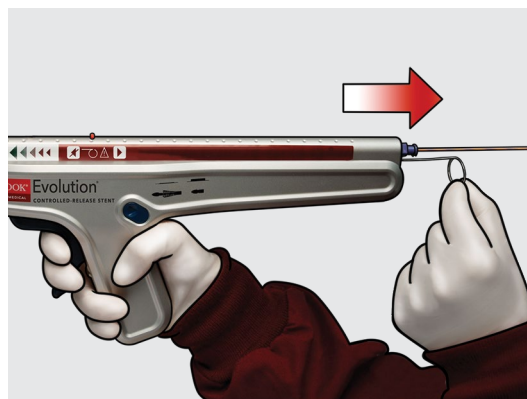
To recapture stent, push directional button on side of delivery system to opposite side. **Note:** Hold thumb on button when squeezing trigger for first time to recapture. Continue squeezing trigger as required to recapture stent by desired amount.

## Step 6



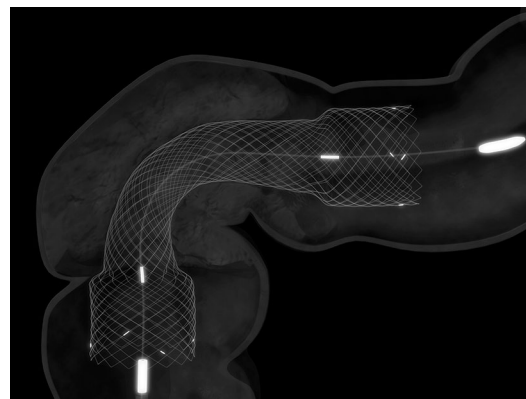
To resume deployment, push directional button to opposite side again and hold button for first stroke while squeezing trigger.

## Step 7



When stent point-of-no-return has been passed, pull safety wire out of delivery handle near wire guide port. Continue deploying stent by squeezing trigger.

## Step 8



After deployment, fluoroscopically confirm stent expansion. Once expansion is confirmed, introduction system can be safely removed.

Refer to current instructions for detailed system use.

Please see product risk information in the IFU at [cookmedical.eu](http://cookmedical.eu).

### Customer Service

EU Website: [cookmedical.eu](http://cookmedical.eu)  
 EDI: [cookmedical.eu/edi](http://cookmedical.eu/edi)  
 Distributors: +353 61239240, [ssc.distributors@cookmedical.com](mailto:ssc.distributors@cookmedical.com)  
 Austria: +43 179567121, [oe.orders@cookmedical.com](mailto:oe.orders@cookmedical.com)  
 Belgium: +32 27001702, [be.orders@cookmedical.com](mailto:be.orders@cookmedical.com)  
 Denmark: +45 38487607, [da.orders@cookmedical.com](mailto:da.orders@cookmedical.com)  
 Finland: +358 972519996, [fi.orders@cookmedical.com](mailto:fi.orders@cookmedical.com)  
 France: +33 171230269, [fr.orders@cookmedical.com](mailto:fr.orders@cookmedical.com)  
 Germany: +49 6950072804, [de.orders@cookmedical.com](mailto:de.orders@cookmedical.com)  
 Hungary: +36 17779199, [hu.orders@cookmedical.com](mailto:hu.orders@cookmedical.com)  
 Iceland: +354 8007615, [IS.orders@cookmedical.com](mailto:IS.orders@cookmedical.com)  
 Ireland: +353 61239252, [ie.orders@cookmedical.com](mailto:ie.orders@cookmedical.com)  
 Italy: +39 0269682853, [it.orders@cookmedical.com](mailto:it.orders@cookmedical.com)  
 Netherlands: +31 202013367, [nl.orders@cookmedical.com](mailto:nl.orders@cookmedical.com)  
 Norway: +47 23162968, [no.orders@cookmedical.com](mailto:no.orders@cookmedical.com)  
 Spain: +34 912702691, [es.orders@cookmedical.com](mailto:es.orders@cookmedical.com)  
 Sweden: +46 858769468, [se.orders@cookmedical.com](mailto:se.orders@cookmedical.com)  
 Switzerland - French: +41 448009609, [fr.orders@cookmedical.com](mailto:fr.orders@cookmedical.com)  
 Switzerland - Italian: +41 448009609, [it.orders@cookmedical.com](mailto:it.orders@cookmedical.com)  
 Switzerland - German: +41 448009609, [de.orders@cookmedical.com](mailto:de.orders@cookmedical.com)  
 United Kingdom: +44 2073654183, [uk.orders@cookmedical.com](mailto:uk.orders@cookmedical.com)

USA Website: [cookmedical.com](http://cookmedical.com)  
 EDI: [cookmedical.com/edi.do](http://cookmedical.com/edi.do)  
**Americas:**  
 Phone: +1 812.339.2235, 800.457.4500, Fax: 800.554.8335  
 E-mail: [customersupport@cookmedical.com](mailto:customersupport@cookmedical.com)  
**Australia:**  
 Phone: +61 734346000, 1800777222, Fax: +61 734346001, 1800077283  
 E-mail: [cau.custserv@cookmedical.com](mailto:cau.custserv@cookmedical.com)



AI, ESC, IR, OHNS, PI, RH, SUR-8.5X11