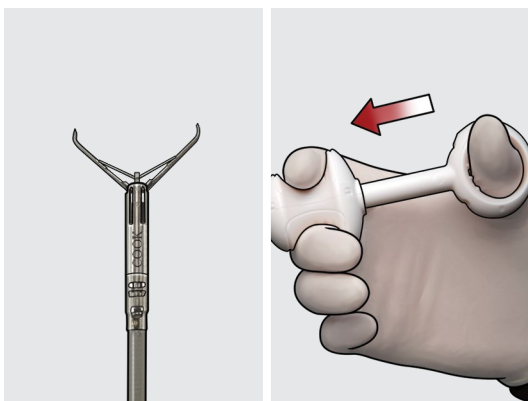


Instinct Plus®

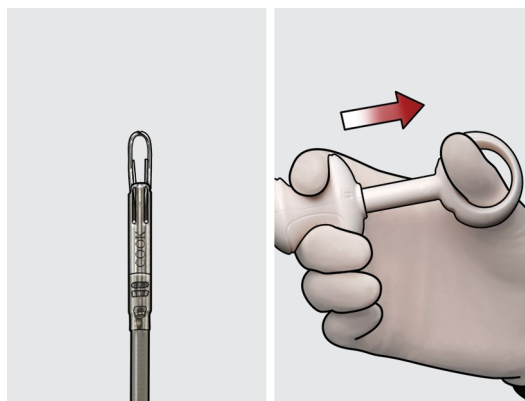
ENDOSCOPIC CLIPPING DEVICE

System Prep 1



Uncoil the device. Verify smooth handle operation and clip action. Open the clip by gently moving the handle spool distally (away from the handle thumb ring). Once the clip is fully open, do not continue advancing the handle spool as the clip may prematurely detach from the catheter.

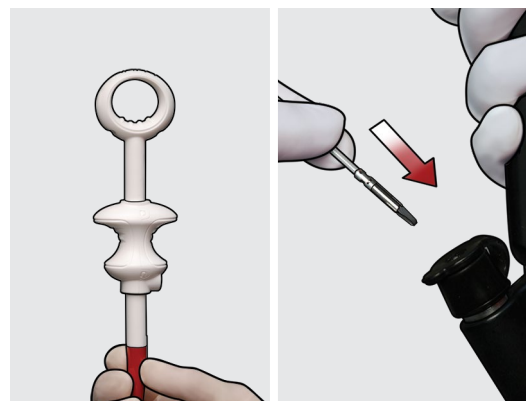
System Prep 2



Close the clip by moving the handle spool proximally until the clip is fully closed.

Caution: Do not continue to pull the handle spool beyond tactile resistance as this may prematurely deploy the clip. Ensure the clip is in the closed position.

Step 1



Visually determine the desired tissue site. With the clip closed and without holding the handle spool, advance the device in small increments into the accessory channel of the endoscope.

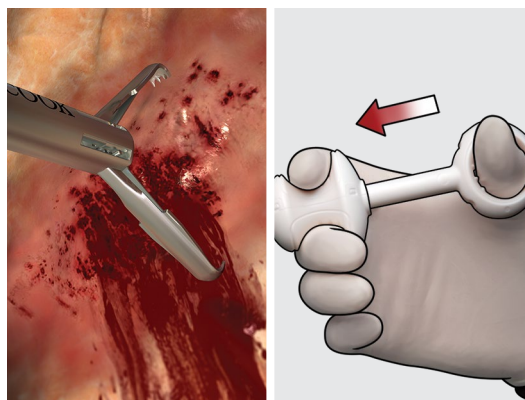
Caution: Holding the handle spool during clip advancement may prematurely deploy the clip.

Step 2



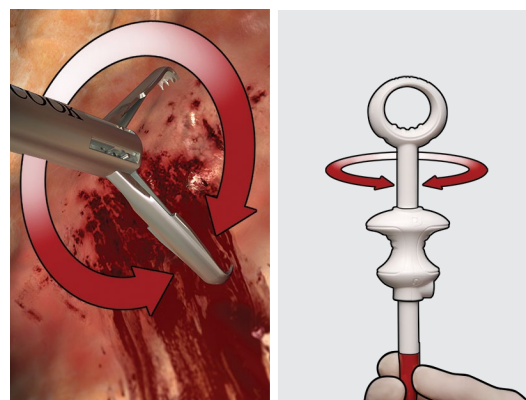
Endoscopically confirm that the device has exited the endoscope. Position the distal tip of the device toward the targeted site.

Step 3



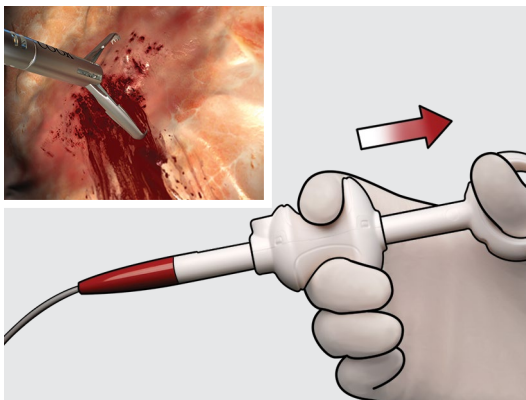
Open the clip and advance the device into contact with the targeted site.

Step 4



The clip can be rotated by turning the handle until the clip is in the proper position.

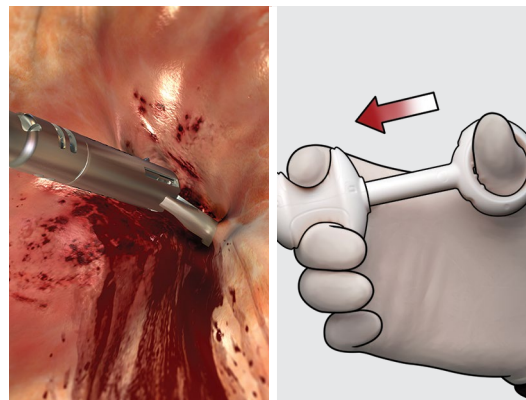
Step 5



Advance the device into contact with the targeted site. When satisfied with clip position, close the clip onto tissue by using slight pressure until tactile resistance is felt.

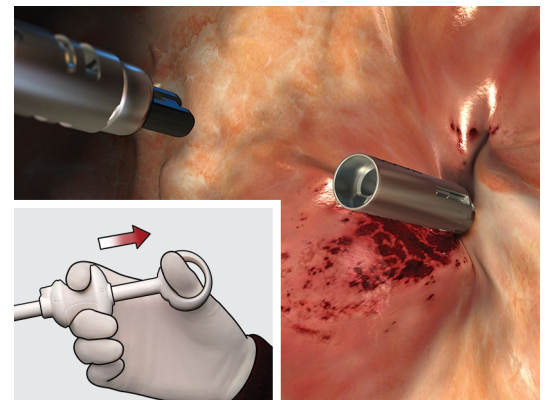
Note: Ensure the clip is not advanced into tissue with excessive force. Avoid clipping onto hard or severely fibrotic tissue. Avoid clipping onto previously deployed clips.

Step 6



Clip position may now be assessed prior to deployment. If the clip is not in the desired position, the clip may be reopened and repositioned up to 5 times.

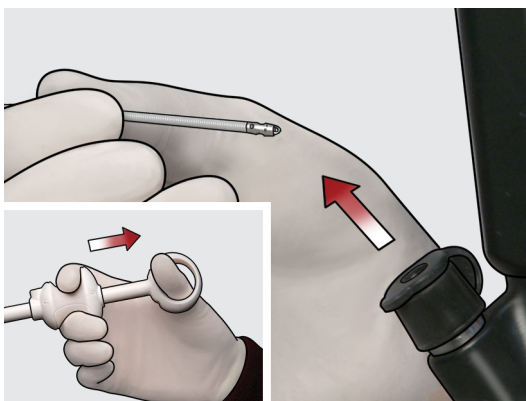
Step 7



To permanently deploy the clip, pull the handle spool toward the handle thumb ring until the clip detaches.

Note: If separation of the clip is not immediate, gently move the catheter back and forth or use other endoscopic maneuvers to separate catheter from clip.

Step 8



Refer to current IFU for detailed system use.

Please see product risk information in the IFU at cookmedical.eu.

After clip deployment, continue to apply **slight** pressure on the handle spool as the device is removed from the endoscope.

Warning: Failure to apply slight pressure to the handle during removal can result in tissue damage from the device.