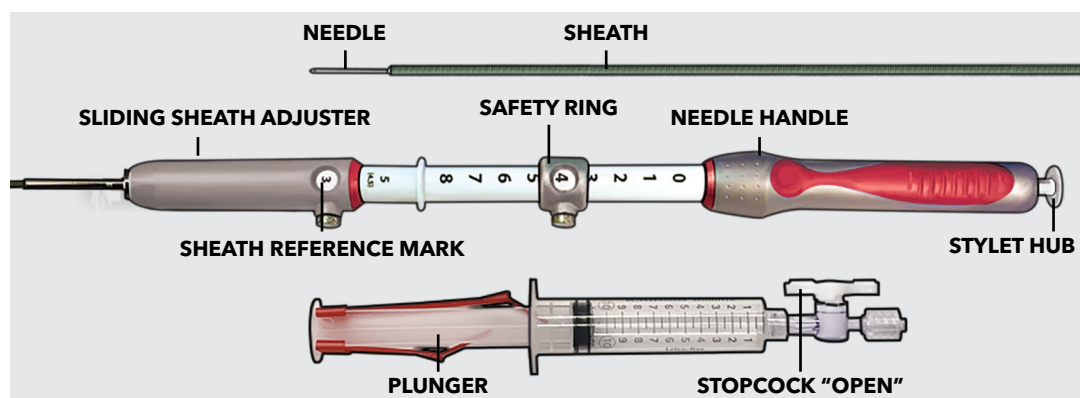


# EchoTip® ClearCore™

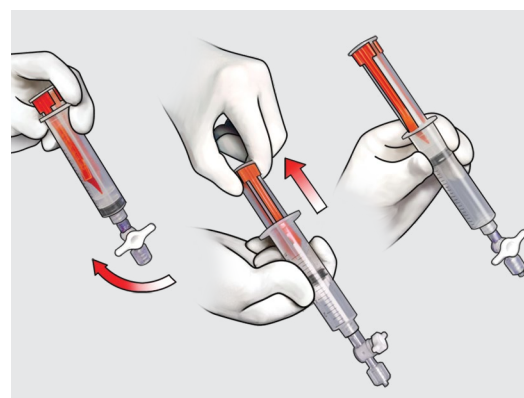
EUS BIOPSY NEEDLE

## Device overview



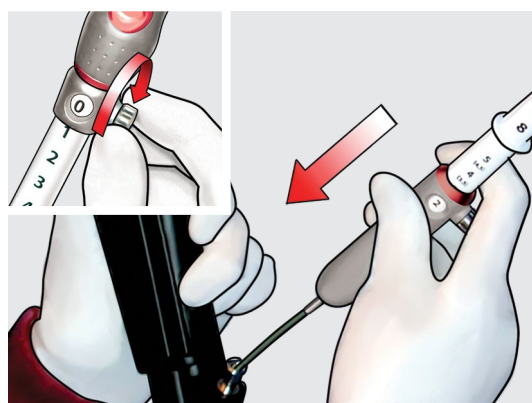
**Note:** The product depicted in the images is the EchoTip ClearCore 22 gauge (ECHO-BX-22).

## System prep



To prepare the syringe, begin with the stopcock in the open position, depress the plunger locks, and fully advance the plunger into the syringe. Turn the stopcock to the closed position and pull the plunger back to the desired setting, creating a vacuum.

## Step 1



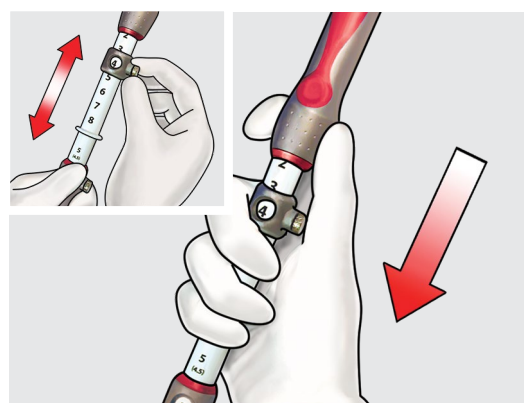
Identify the desired target site. Ensure the needle is retracted into the sheath before inserting it into the scope. Advance the device into the endoscope until the fittings meet. Attach the device by rotating the device handle clockwise. **Caution:** If resistance is encountered on needle introduction, reduce the angulation of the scope until smooth passage is allowed.

## Step 2



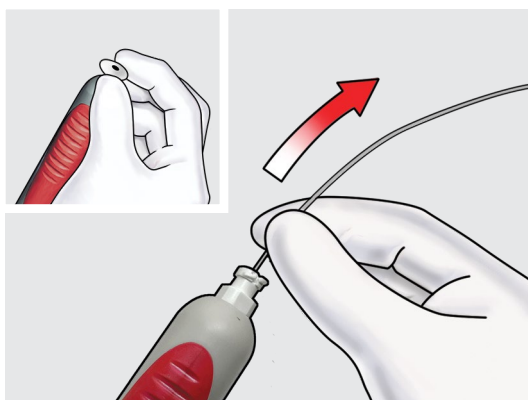
Adjust the sheath to the desired length by loosening the thumbscrew on the sliding sheath adjuster and slide until preferred length is attained; then tighten the thumbscrew, ensuring the sheath has emerged from the working channel of the scope.

## Step 3



Set the needle extension to the desired length by loosening the thumbscrew on the safety ring, and advance until the desired reference mark appears in the window; then tighten the thumbscrew. **Caution:** Ensure the device has been attached to the accessory channel of the scope. Advance the needle into the target site.

## Step 4

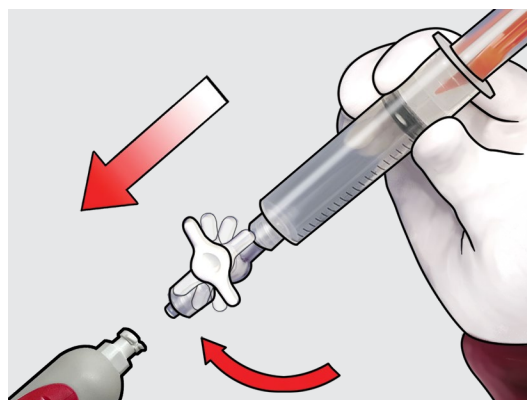


Standard vacuum syringe techniques may be applied for biopsy or, if desired, other techniques that may or may not incorporate the use of the stylet may be applied.

Remove the stylet by gently pulling back on the plastic hub. Preserve the stylet if additional sample collection is required later.

If using a syringe, follow Step 5.

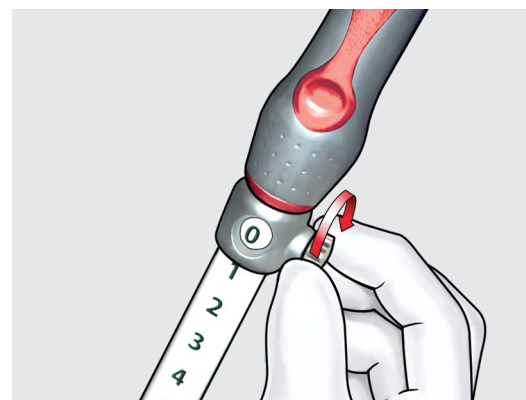
## Step 5



Attach the syringe to the device and open the stopcock to facilitate biopsy. Move the needle handle back and forth within the target site.

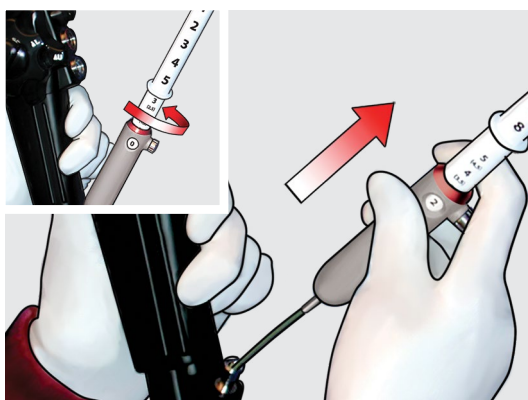
**Note:** Do not remove the needle from the target site during biopsy. Upon completion of biopsy, turn the stopcock to the closed position.

## Step 6



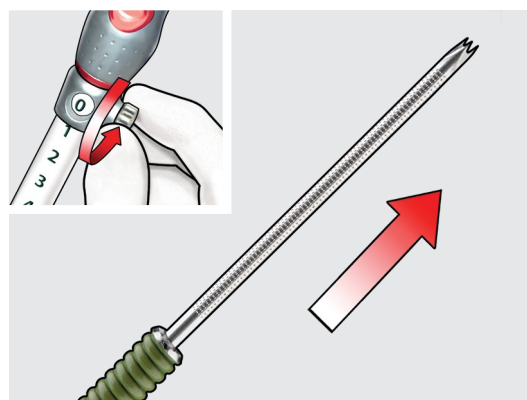
Retract the needle completely into the sheath and lock the thumbscrew on the safety ring at the 0 cm mark.

## Step 7



Disconnect the needle from the accessory channel port on the scope by rotating the handle counterclockwise, and withdraw the entire device from the scope.

## Step 8



Unlock the thumbscrew on the safety ring and extend the needle. Use a new syringe or the stylet to expel the specimen; then prepare per institutional guidelines.

Additional samples may be obtained by repeating Steps 1–8.

This document contains a summary of the Instructions for Use (IFU) but is not a substitute for the IFU. Please refer to the IFU for full prescribing information, warnings, precautions, and potential adverse events.

Please see product risk information in the IFU at [cookmedical.eu](http://cookmedical.eu).

### Customer Service

EU Website: [cookmedical.eu](http://cookmedical.eu)  
 EDI: [cookmedical.eu/edi](http://cookmedical.eu/edi)  
 Distributors: +353 61239240, [ssc.distributors@cookmedical.com](mailto:ssc.distributors@cookmedical.com)  
 Austria: +43 179567121, [oe.orders@cookmedical.com](mailto:oe.orders@cookmedical.com)  
 Belgium: +32 27001702, [be.orders@cookmedical.com](mailto:be.orders@cookmedical.com)  
 Denmark: +45 38487607, [da.orders@cookmedical.com](mailto:da.orders@cookmedical.com)  
 Finland: +358 97251996, [fi.orders@cookmedical.com](mailto:fi.orders@cookmedical.com)  
 France: +33 171230269, [fr.orders@cookmedical.com](mailto:fr.orders@cookmedical.com)  
 Germany: +49 6950072804, [de.orders@cookmedical.com](mailto:de.orders@cookmedical.com)  
 Hungary: +36 17779199, [hu.orders@cookmedical.com](mailto:hu.orders@cookmedical.com)  
 Iceland: +354 8007615, [is.orders@cookmedical.com](mailto:is.orders@cookmedical.com)  
 Ireland: +353 61239252, [ie.orders@cookmedical.com](mailto:ie.orders@cookmedical.com)  
 Italy: +39 0269682853, [it.orders@cookmedical.com](mailto:it.orders@cookmedical.com)  
 Netherlands: +31 202013367, [nl.orders@cookmedical.com](mailto:nl.orders@cookmedical.com)  
 Norway: +47 23162968, [no.orders@cookmedical.com](mailto:no.orders@cookmedical.com)  
 Spain: +34 912702691, [es.orders@cookmedical.com](mailto:es.orders@cookmedical.com)  
 Sweden: +46 858769468, [se.orders@cookmedical.com](mailto:se.orders@cookmedical.com)  
 Switzerland - French: +41 448009609, [fr.orders@cookmedical.com](mailto:fr.orders@cookmedical.com)  
 Switzerland - Italian: +41 448009609, [it.orders@cookmedical.com](mailto:it.orders@cookmedical.com)  
 Switzerland - German: +41 448009609, [de.orders@cookmedical.com](mailto:de.orders@cookmedical.com)  
 United Kingdom: +44 2073654183, [uk.orders@cookmedical.com](mailto:uk.orders@cookmedical.com)

USA Website: [cookmedical.com](http://cookmedical.com)  
 EDI: [cookmedical.com/edi.do](http://cookmedical.com/edi.do)  
**Americas:**  
 Phone: +1 812.339.2235, 855.207.7214, Fax: 800.330.5490  
 E-mail: [customersupport@cookmedical.com](mailto:customersupport@cookmedical.com)  
**Australia:**  
 Phone: +61 734346000, 1800777222, Fax: +61 734346001, 1800077283  
 E-mail: [cau.custserv@cookmedical.com](mailto:cau.custserv@cookmedical.com)



AI, ESC, IR, PI-8.5X11