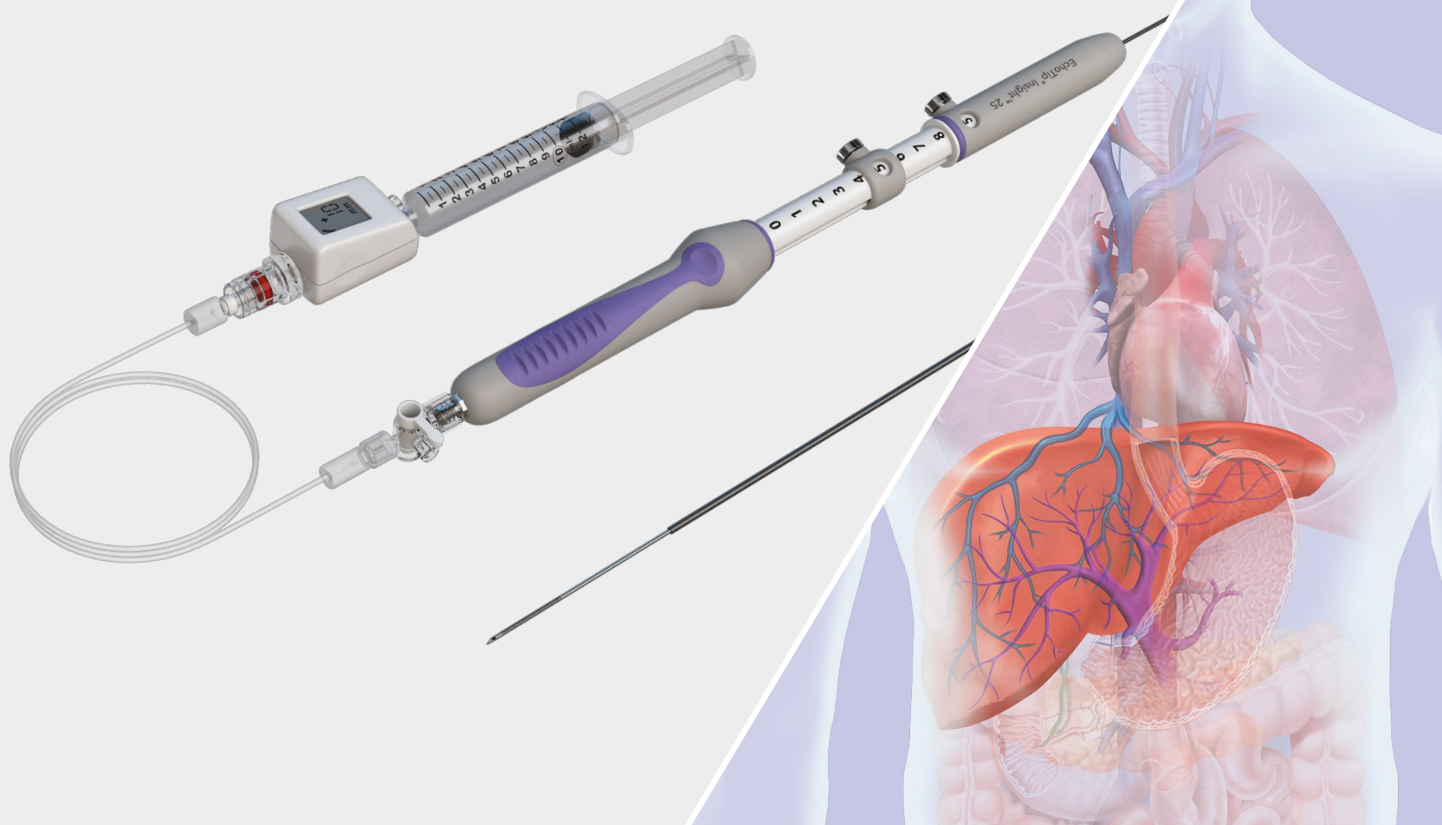


Directly measure portal pressure under EUS.



EchoTip Insight[®]
PORTOSYSTEMIC PRESSURE GRADIENT

Accessible portal pressure measurement for endohepatology

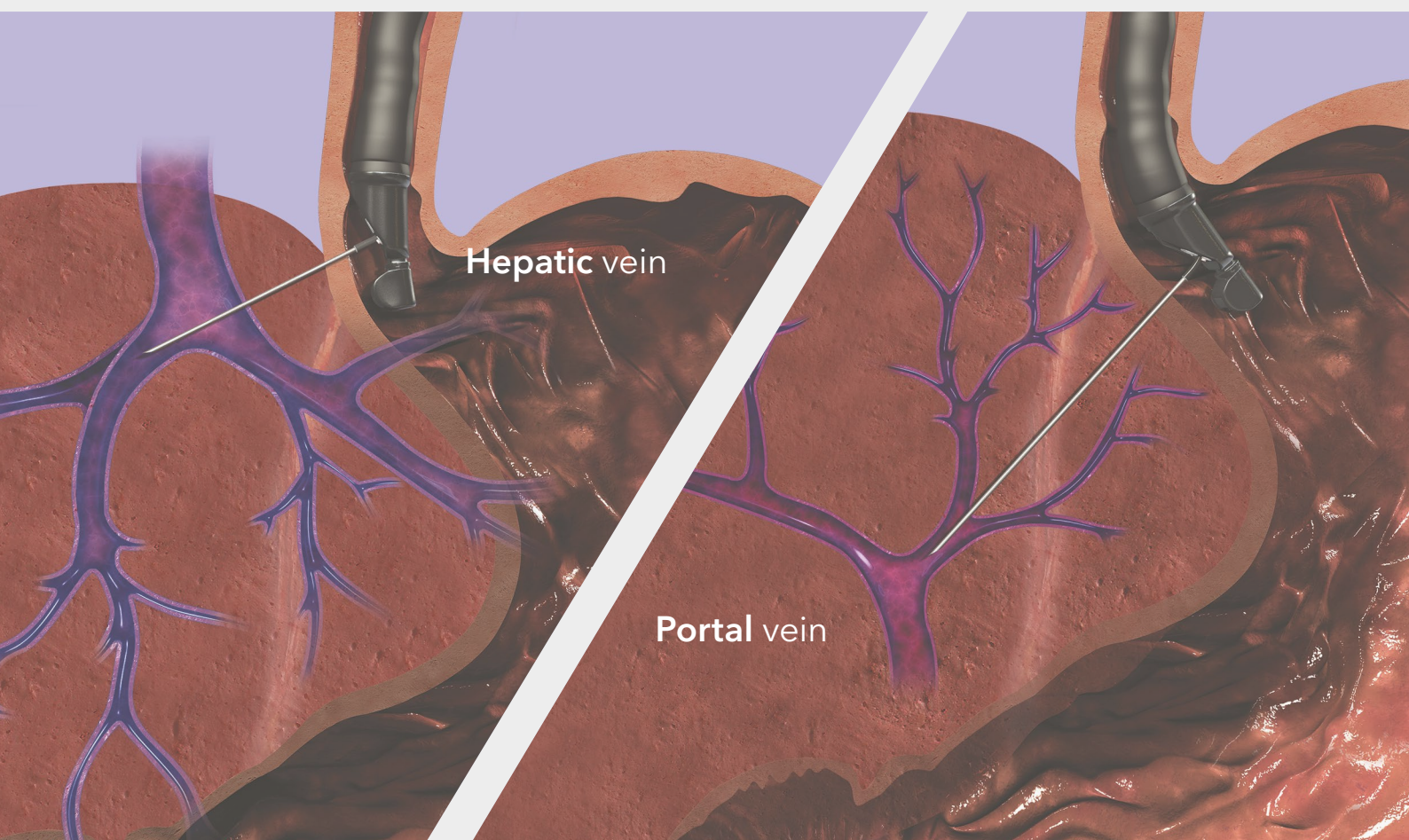
The EchoTip Insight system allows endoscopists to directly measure portal pressure under endoscopic ultrasound (EUS)—a new, minimally invasive procedure which now allows for comprehensive liver assessments through endoscopy procedures.

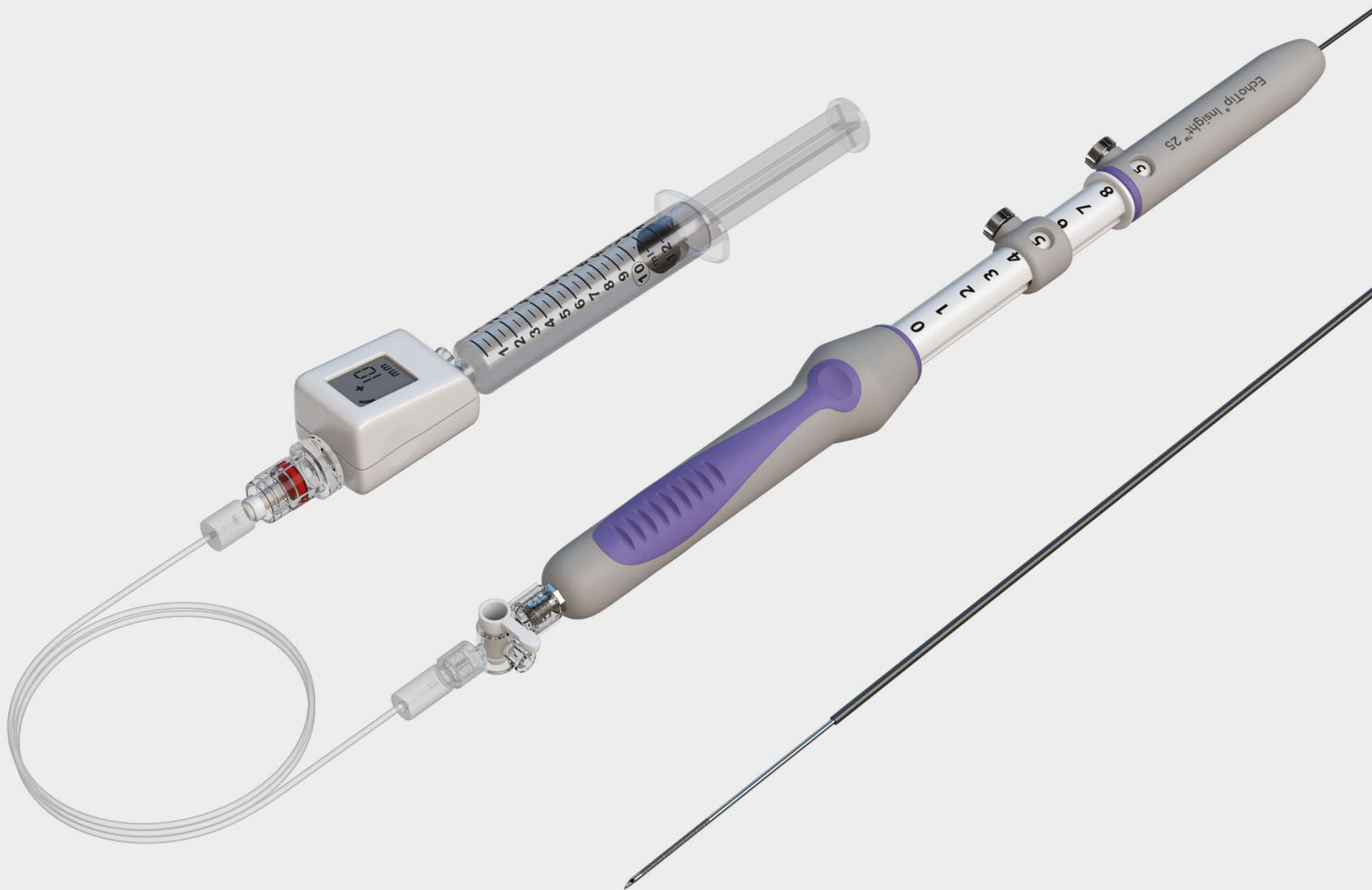
Direct measurement

With the EchoTip Insight system, you can now directly measure the pressure in the portal and hepatic veins. Under EUS guidance the average of three measurements in each vein is used to calculate the gradient.

Accurate measurement

The transducer allows you to accurately measure the portal pressure gradient so you can determine the appropriate treatment pathway for your patient.





Needle

- Echogenic tip so you can ensure that the needle tip is within the target
- Small gauge needle (25 gauge) to facilitate access of the portal and hepatic veins

Transducer

- Digital display of the pressure reading
- Self-calibrating transducer
- Compact size

EchoTip Insight[®]
PORTOSYSTEMIC PRESSURE GRADIENT

Product specifications

This device is used to access the venous vasculature related to the portal circulation and hepatic outflow through the accessory channel of an ultrasound endoscope to allow for direct pressure measurement.

Order Number	Reference Part Number	Needle gauge	Sheath Fr	Adjustable Needle Extension Length cm	Connecting Tube Length cm	Pressure Range mmHg	Minimum Accessory Channel Diameter mm
G58000	ECHO-PPG-I	25	5.2	8	90	-199 to +999	2.8

Some products or part numbers may not be available in all markets. Contact your local Cook representative or Customer Support & Distribution for details. Please see product risk information in the IFU at cookmedical.eu.

Vista® | Education and Training

To learn more about EchoTip Insight please contact your local Cook representative or visit www.cookmedical.com.

If you would like to attend one of our Vista Education and Training workshops, please find information on our Vista website: vista.cookmedical.com.

Customer Service

EU website: cookmedical.eu
EDI: cookmedical.eu/edi
Distributors: +353 61239240, emea.distributors@cookmedical.com
Austria: +43 179567121, oe.orders@cookmedical.com
Belgium: +32 27001702, be.orders@cookmedical.com
Denmark: +45 38487607, da.orders@cookmedical.com
Finland: +358 972519996, fi.orders@cookmedical.com
France: +33 171230269, fr.orders@cookmedical.com
Germany: +49 21612723770, de.orders@cookmedical.com
Hungary: +36 17779199, hu.orders@cookmedical.com
Iceland: +354 8007615, is.orders@cookmedical.com
Ireland: +353 61239252, ie.orders@cookmedical.com
Italy: +39 0269682853, it.orders@cookmedical.com
Netherlands: +31 202013367, nl.orders@cookmedical.com
Norway: +47 23162968, no.orders@cookmedical.com
Spain: +34 912702691, es.orders@cookmedical.com
Sweden: +46 858769468, se.orders@cookmedical.com
Switzerland - French: +41 448009609, fr.orders@cookmedical.com
Switzerland - Italian: +41 448009609, it.orders@cookmedical.com
Switzerland - German: +41 448009609, de.orders@cookmedical.com
United Kingdom: +44 2073654183, uk.orders@cookmedical.com

USA website: cookmedical.com
EDI: cookmedical.com/edi.do

Americas:
Phone: +1 812.339.2235, 800.457.4500, Fax: 800.554.8335
Email: customersupport@cookmedical.com

Australia:
Phone: +61 734346000, 1800777222, Fax: +61 734346001, 1800077283
Email: cau.custserv@cookmedical.com



AI, ESC, IR, PI-A4