



Get closure.

One-to-one rotation for precise placement and a tissue-grasping design for secure closure



Instinct Plus[®]
ENDOSCOPIC CLIPPING DEVICE

Customer Service

EU website: cookmedical.eu
EDI: cookmedical.eu/edi
Distributors: +353 61239240, emea.distributors@cookmedical.com
Austria: +43 179567121, oe.orders@cookmedical.com
Belgium: +32 27001702, be.orders@cookmedical.com
Denmark: +45 38487607, da.orders@cookmedical.com
Finland: +358 972519996, fi.orders@cookmedical.com
France: +33 171230269, fr.orders@cookmedical.com
Germany: +49 2161 272 3770, de.orders@cookmedical.com
Hungary: +36 17779199, hu.orders@cookmedical.com
Iceland: +354 8007615, is.orders@cookmedical.com
Ireland: +353 61239252, ie.orders@cookmedical.com
Italy: +39 0269682853, it.orders@cookmedical.com
Netherlands: +31 202013367, nl.orders@cookmedical.com
Norway: +47 23162968, no.orders@cookmedical.com
Spain: +34 912702691, es.orders@cookmedical.com
Sweden: +46 858769468, se.orders@cookmedical.com
Switzerland - French: +41 448009609, fr.orders@cookmedical.com
Switzerland - Italian: +41 448009609, it.orders@cookmedical.com
Switzerland - German: +41 448009609, de.orders@cookmedical.com
United Kingdom: +44 2073654183, uk.orders@cookmedical.com

USA website: cookmedical.com
EDI: cookmedical.com/edi.do
Americas:
Phone: +1 812.339.2235, 800.457.4500, Fax: 800.554.8335
Email: customersupport@cookmedical.com
Australia:
Phone: +61 734346000, 1800772222, Fax: +61 734346001, 1800077283
Email: cau.custserv@cookmedical.com



AI, ESC, IR, PI-A4

© COOK 11/2025 ESC-WF830300-EN-F





Reengineered for smoother operation and responsive handling,¹ the Instinct Plus Endoscopic Clipping Device combines strength with the simplicity of one-step deployment.

Strength and security

- Strong clip retention¹
- Multiple anchoring tips on the clip to aid in dragging and holding tissue
- Clips reinforced with nitinol, a superelastic shape-memory alloy

Responsive handling

- Adjustable clip span that opens up to 16 mm wide
- One-to-one rotation from the handle to the tip
- Ability to open and close up to five times for repositioning

Versatility

- Compatibility with both forward-viewing and side-viewing scopes
- Indication for defect closure and haemostasis as well as affixing jejunal feeding tubes and oesophageal self-expanding metal stents (See complete indications for use for details.)

1. Ponugoti PL, Rex DK. Clip retention rates and rates of residual polyp at the base of retained clips on colorectal EMR sites. *Gastrointest Endosc.* 2017;85(3):530-534.

MR conditional 

A patient with this clip can be safely scanned immediately in an MR system that meets the following conditions:

- Spatial magnetic field of 3.0 or 1.5 T
- Maximum special field gradient of 1,900 G/cm (19 T/m)
- Maximum MRI system reported, whole body averaged specific absorption rate (SAR) of 2.0 W/kg

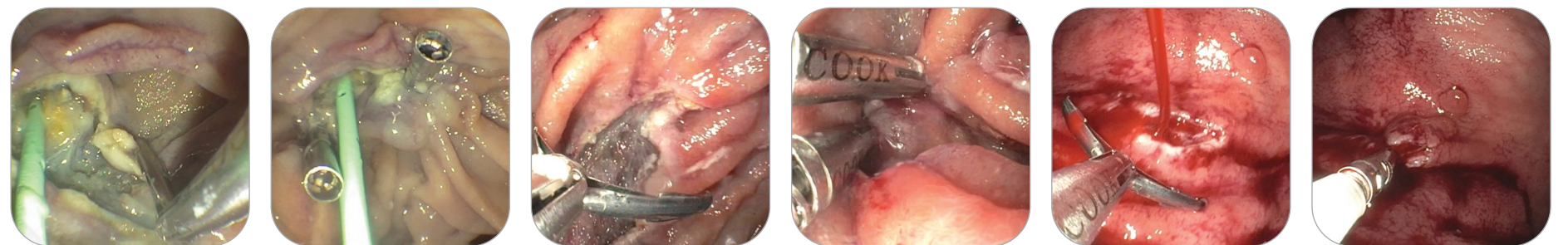
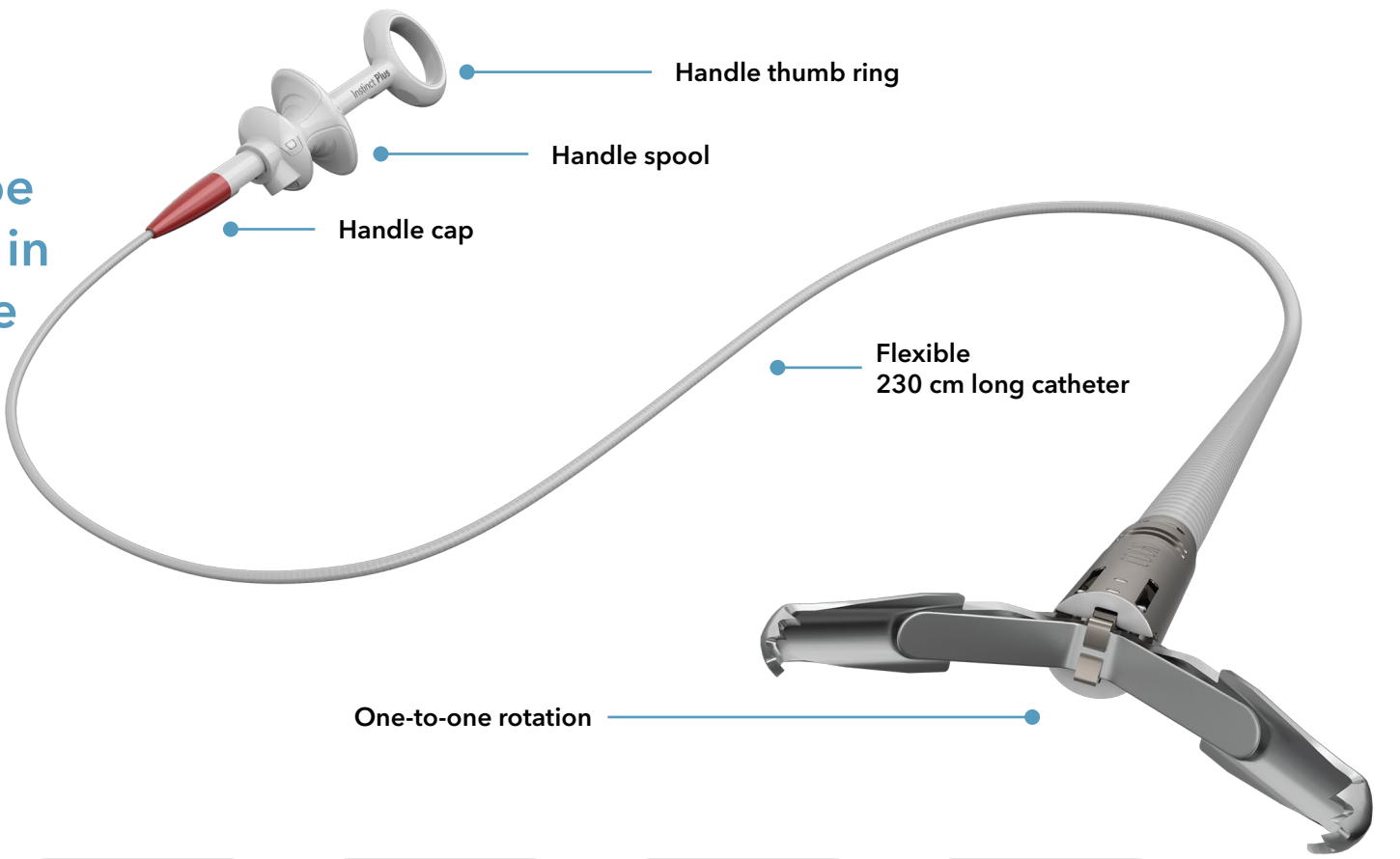


Image credit: Dr Shou Jang Tang, the University of Mississippi Medical Center, Jackson, MS

The Instinct Plus Endoscopic Clipping Device is endoscopically placed within the gastrointestinal tract to apply mechanical pressure to tissue and is used for endoscopic clip placement within the gastrointestinal tract for the purpose of:

- Endoscopic marking
 - › Polyps less than 1.5 cm in diameter
- Haemostasis for:
 - › Mucosal/submucosal defects less than 3 cm
 - › Bleeding ulcers
 - › Arteries less than 2 mm
- Anchoring to affix jejunal feeding tubes to the wall of the small bowel
 - › Diverticula in the colon
 - › Prophylactic clipping to reduce the risk of delayed bleeding post lesion resection
- Anchoring to affix fully covered oesophageal self-expanding metal stents to the wall of the oesophagus in patients with fistulas, leaks, perforations, or disunion
 - › As a supplementary method for closure of GI tract luminal perforations less than 20 mm that can be treated conservatively

Order Number	Reference Part Number	Clip Opening Width mm	Catheter Fr	Catheter Length cm	Catheter Length cm	MR Status	Minimum Forward-Viewing Channel Diameter mm	Minimum Side-Viewing Channel Diameter mm
G5810	INSC-P-7-230-S	16	7	230	10	MR Conditional	2.8	4.2

Please follow any step-by-step instructions carefully, including the risk, technical information, Device Name and intended use provided in the IFU at cookmedical.eu. Note that some products or part numbers may not be available in all markets; consult your Cook representative for details.