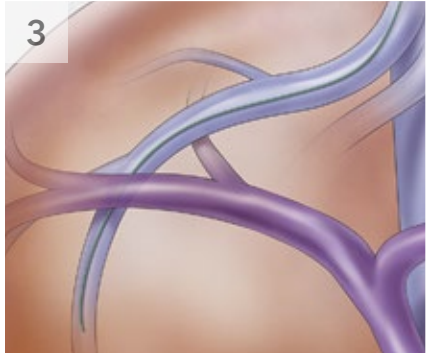


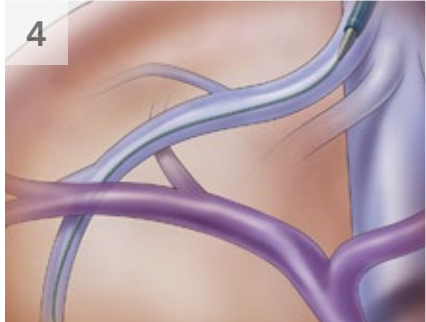
**1** Use microaccess or standard 18 gage access techniques to introduce an appropriate .035 inch diameter wire guide into the inferior vena cava via jugular venous access.



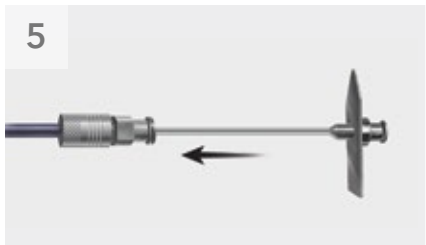
**2** Using the Torcon NB Advantage Catheter and wire guide of your choice, catheterize the right hepatic vein (RHV) or the most adequate hepatic vein branch.



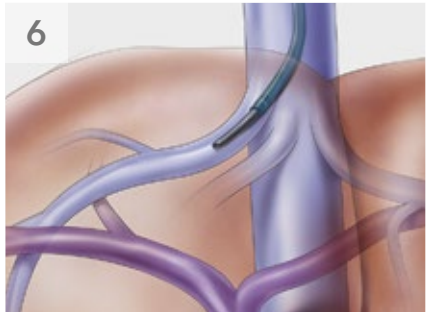
**3** Leave the wire guide in a safe, distal position and remove the Torcon NB Advantage Catheter.



**4** Dilate the access site with the 11 Fr dilator. Advance the Flexor introducer sheath assembly over the wire guide as distal as possible into the hepatic vein. Remove the wire guide and the Flexor Check-Flo Performer Introducer's dilator.



**5** Introduce the Colapinto Needle-and-PTFE Catheter assembly through the sheath. The needle should not protrude past the catheter end hole.



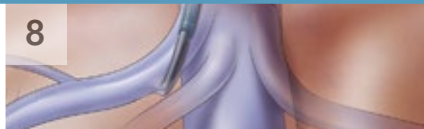
**6** Advance the Colapinto Needle-and-PTFE Catheter assembly into the hepatic vein.



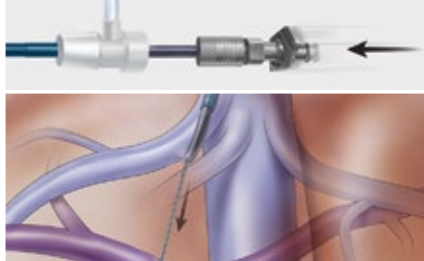
**7** Orient the Colapinto Needle-and-PTFE Catheter assembly inferiorly and rotate it anteriorly.



(The arrow baseplate on the needle indicates the direction of the needle curve.)



**8** Wedge the Colapinto Needle-and-PTFE Catheter assembly against the vein wall.



In one forward movement, thrust the needle through the hepatic parenchyma and toward the portal system.



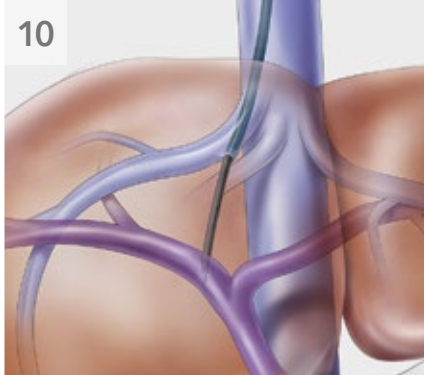
**9** Connect a syringe filled with contrast medium to the needle, apply suction to the syringe, and withdraw the needle until blood is seen.



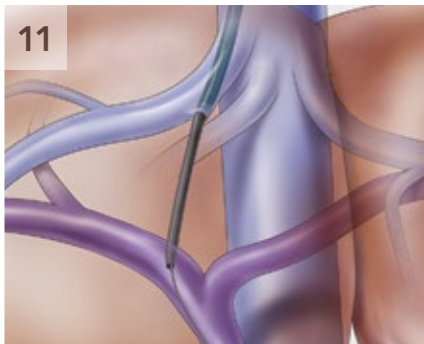
Inject a small amount of contrast medium.



Confirm the needle's position in the portal system.



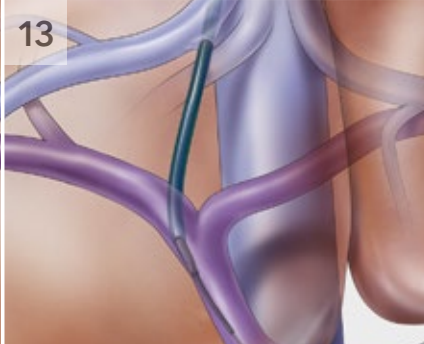
**10** Advance the Colapinto PTFE transjugular catheter over the transjugular needle further into the portal vein. Remove the transjugular needle.



**11** Introduce the Newton wire guide into the portal branch and select the main portal vein (MPV).



**12** Advance the Colapinto PTFE transjugular catheter and Flexor Introducer sheath into position across the parenchymal tract. Advance the Van AnDel catheter through the Colapinto PTFE transjugular catheter into the portal vein.



**13** Proceed with any indicated interventional procedures.

Illustrations by Lisa Clark

**WAYS TO LEARN HOW TO USE THE RING TRANSJUGULAR INTRAHEPATIC ACCESS SET.**

**WATCH THE ANIMATION.**  
[cookmedical.eu/RINGanimation](http://cookmedical.eu/RINGanimation)



**ATTEND HANDS-ON TRAINING.**  
[cookmedical.eu/RINGlab](http://cookmedical.eu/RINGlab)

**TRY THE SET IN A CASE.**  
Contact your local Cook Medical representative.

**Caution:** Federal (USA) law restricts the use of these devices to sale by or on the order of a physician. Refer to the Instructions for Use (IFU) for complete product information and full prescribing information including indications, contraindications, warnings, and precautions.

Some products or part numbers may not be available in all markets. Contact your local Cook representative or Customer Service for details.