



MINC+™

BENCHTOP INCUBATOR

Quick reference guide



1



Standby/ON



Press this button for 2 seconds to activate the device.

2



Enable/disable incubation chamber heater



- Touch the **Unlock** button for 2 seconds. The MINC+ will beep on touch, and the keypad backlight will come on when the keypad is active.
- Touch and release the **Enable/disable incubation chamber heater** button. This will toggle the chamber on or off, depending on the current state. The state will be displayed on the chamber's display screen. The new changes to the heating state will be saved automatically.



3



Increase/decrease chamber temperature set point

- Touch the **Unlock** button for 2 seconds. The MINC+ will beep on touch, and the keypad backlight will come on when the keypad is active.
- Touch and release the **Increase/decrease chamber temperature set point** buttons for that chamber until the desired set point temperature is displayed on the chamber display screen. The set point is displayed on the chamber display screen in white text immediately above the **Increase/decrease temperature set point** buttons.
- The temperature can be adjusted in 0.1 °C increments within a range of 35.0 °C to 40.0 °C. The new changes to the state will be saved automatically.



4



Enable/disable flask water-level monitoring


- Touch the **Unlock** button for 2 seconds. The MINC+ will beep on touch, and the keypad backlight will come on when the keypad is active.
- Touch and release the **Enable/disable humidification flask water-level monitoring** button to toggle water-level monitoring on and off. The **Water level indicator** icon will show that the water-level monitoring is enabled and the amount of water in the humidification flask. The state will be saved automatically.




Enable/disable gas flow



Turning the gas flow ON

- Touch the **Unlock** button for 2 seconds. The MINC+ will beep on touch, and the keypad backlight will come on when the keypad is active.
- Touch and release the **Enable/disable gas flow** button to toggle gas flow on and off. When activated, the chamber's status screen will initially display the **Gas flow purge**  icon, indicating that the gas flow is enabled. The MINC+ will begin a gas purge cycle for approximately 3 minutes and then go into normal flow operation. The state will be saved automatically.

Turn the gas flow OFF

- Touch the **Unlock** button for 2 seconds. The MINC+ will beep on touch, and the keypad backlight will come on when the keypad is active.
- Touch and release the **Enable/disable gas flow** button. The chamber status screen will display the **Gas flow disabled**  icon, indicating that the gas flow is disabled for that chamber. The state will be saved automatically.



6

Center console touchscreen

This is the interface for DishTrace MINC+ software.

7

USB port

This is the USB port for downloading data and dish information and for DishTrace MINC+ software updates.

8



Keypad unlock

Unlock the keypad by pressing the **Unlock** button for 2 seconds. The MINC+ will beep on touch, and the keypad backlight will come on when the keypad is active. The keypad will remain active for 5 seconds and lock after the last input.



9

Humidification flasks

A sterile, disposable humidification flask is provided for each incubation chamber. The flasks are backlit to allow users to see the water level and the gas bubbles passing through the water. See the list of humidification flask components and installation instructions in the IFU.

10

Chamber lid latch

A latch secures the lid of each MINC+ incubator chamber.

11

Gas outlet port

A port enables gas to exit each chamber.



12 Media warming chamber (MWC)

This nongassed chamber is used to warm and maintain a stable temperature for test tubes of IVF media and oil. Tubes should be capped while in the media warming chamber.

13 Media warming chamber lights

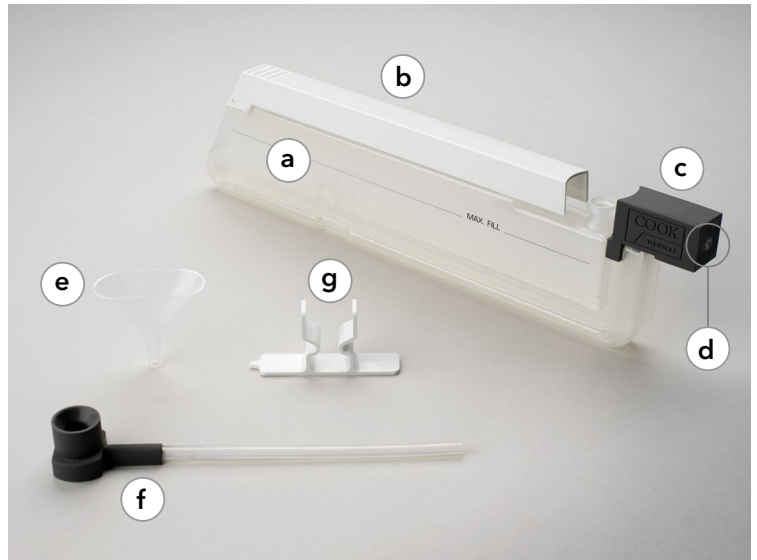
These lights indicate the MWC temperature status.

- Green indicates that the MWC is within ± 0.5 °C of the set point temperature.
- Amber indicates that the MWC is equilibrating to temperature or within ± 0.5 °C to ± 1 °C of the set point temperature during normal operation.
- Red indicates that the MWC is out of range of the set point temperature by more than ± 1 °C.



Humidification flask components

- a** Humidification flask reservoir
- b** Humidification flask latch
- c** Humidification flask seal housing
- d** Humidification flask filter sleeve
- e** Disposable funnel
- f** Humidification flask T-piece
- g** Temporary support clip used when filling the flask



Humidification flask installation



Please refer to the Instructions for Use (IFU) for detailed indications, contraindications, warnings, and precautions.



MINC+™

BENCHTOP INCUBATOR

Some products or part numbers may not be available in all markets. Contact your local Cook representative or Customer Service for details.
Please see product risk information in the IFU at cookmedical.eu

Customer Service

EU Website: cookmedical.eu
EDI: cookmedical.eu/edi
Distributors: +353 61239240, ssc.distributors@cookmedical.com
Austria: +43 179567121, oe.orders@cookmedical.com
Belgium: +32 27001702, be.orders@cookmedical.com
Denmark: +45 38487607, da.orders@cookmedical.com
Finland: +358 972519996, fi.orders@cookmedical.com
France: +33 171230269, fr.orders@cookmedical.com
Germany: +49 6950072804, de.orders@cookmedical.com
Hungary: +36 17779199, hu.orders@cookmedical.com
Iceland: +354 800 7615, is.orders@cookmedical.com
Ireland: +353 61239252, ie.orders@cookmedical.com
Italy: +39 0269682853, it.orders@cookmedical.com
Netherlands: +31 202013367, nl.orders@cookmedical.com
Norway: +47 23162968, no.orders@cookmedical.com
Spain: +34 912702691, es.orders@cookmedical.com
Sweden: +46 858769468, se.orders@cookmedical.com
Switzerland - French: +41 448009609, fr.orders@cookmedical.com
Switzerland - Italian: +41 448009609, it.orders@cookmedical.com
Switzerland - German: +41 448009609, de.orders@cookmedical.com
United Kingdom: +44 2073654183, uk.orders@cookmedical.com

USA Website: cookmedical.com
EDI: cookmedical.com/edi.do

Americas:

Phone: +1 812.339.2235, 800.457.4500, Fax: 800.554.8335
E-mail: customersupport@cookmedical.com

Australia:

Phone: +61 734346000, 1800777222, Fax: +61 734346001, 1800077283
E-mail: cau.custserv@cookmedical.com



AI-ESC-IR-OHNS-PI-RH-SUR-A4