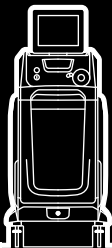


Quanta System

LASER IN OUR DNA

Cyber Ho 60

HOLMIUM LASER





Cyber Ho 60

THE REVOLUTION IN LITHOTRIPSY

The **Cyber Ho Holmium** laser (2.1 μm) meets the increasing demand of efficacy, flexibility and cost-effectiveness as a unique multi-application laser platform able to perform both **Lithotripsy** and **HoLEP**.

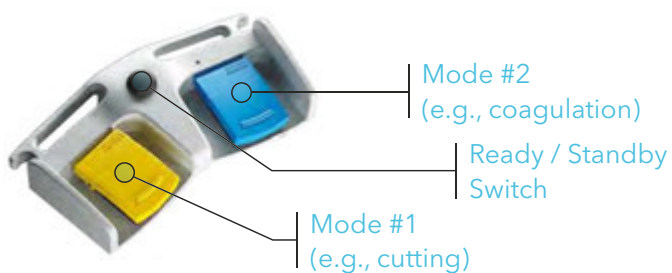
Cyber Ho brings outstanding innovation by offering the exclusive **Vapor Tunnel™**, **Virtual Basket™** and **MasterPULSE** technology for advanced retropulsion control, along with impressive energy and frequency (up to **60 Hz**) settings.

General Overview

- ✓ Effective Lithotripsy
- ✓ High-Frequency Emission (up to 60 Hz)
- ✓ Minimised Retropulsion
- ✓ BPH Treatment
- ✓ Reduced Depth of Penetration (0.3 - 0.4 mm)
- ✓ Soft Tissue Surgery
- ✓ High Versatility
- ✓ Quick ROI

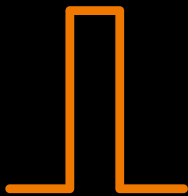


Double Footswitch

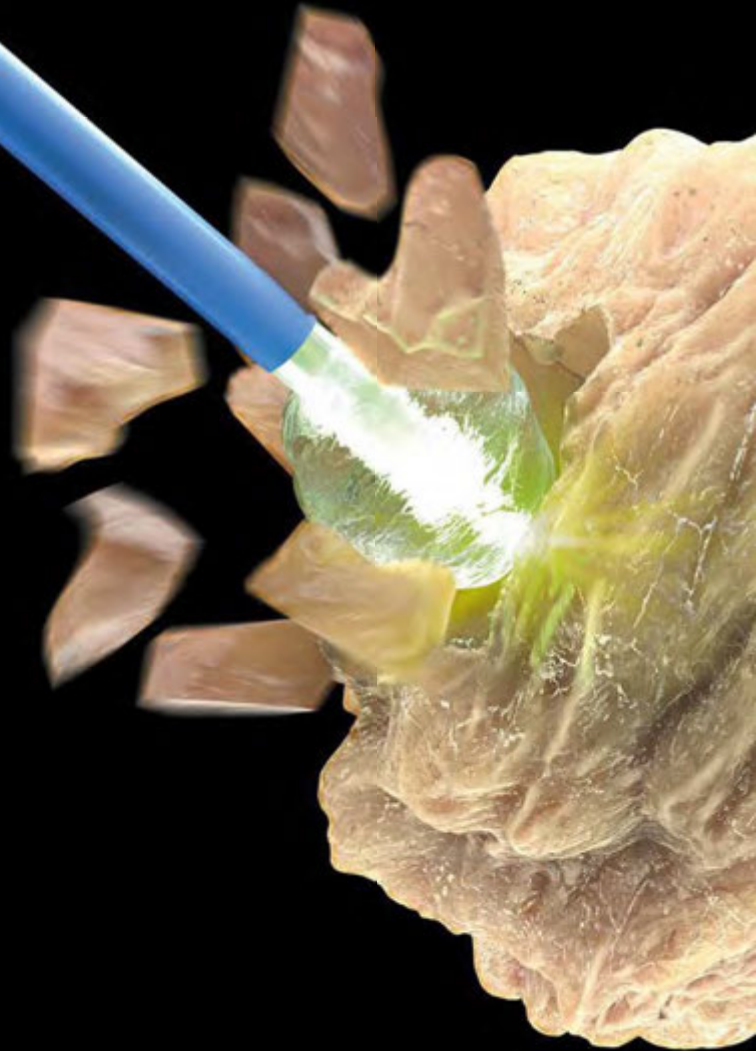


The double footswitch enables **immediate** switch from one emission mode to another, with **complete customisation** of pedal-mode association. No bothersome interruptions are needed for settings readjustment.

Fragmentation



**SHORT PULSE
(HIGH ENERGY)**



HIGH PULSE ENERGY

Up to 5 J, for wide pulse energy range



TREAT THE HARDEST STONES TOO

Greater pulse energy allows you to break harder stones.



COLLECTION BASKET NEEDED

Retrieve stone pieces upon fragmentation.

Dusting Effect



LIMITED RETROPULSION

Easy ablation with no need to chase the stone



NO NEED FOR BASKET

The obtained fine dust obviates the retrieval phase.



LONG PULSE WIDTH

Up to 1100 μ s, for smooth Long Pulse Dusting



EXTREME FREQUENCY

Up to 60 Hz, for enhanced speed in Dusting action



**HIGH
FREQUENCY**

Vapor Tunnel™

Consisting of a Single **Specific Long Pulse**, this emission mode allows limited retropulsion and fine stone ablation. The Vapor Tunnel™ is designed to use the minimum peak power in accordance with selected output settings.



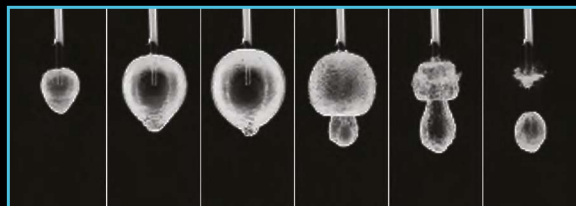
Bubble Dynamics of Vapor Tunnel™



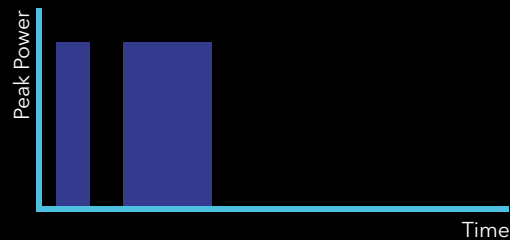
Virtual Basket™

Composed of a **Double Pulse Emission***, combines a low retropulsion with a fragment suction effect.

* (time duration separating the two pulses is chosen so that the second pulse is emitted from the distal tip of the fibre when the bubble size, and the corresponding amount of displaced fluid, is at a maximum)



Bubble Dynamics of Virtual Basket™



Advantages of Virtual Basket™ & Vapor Tunnel™



NO EXTRA COSTS

These modes do not need dedicated and more expensive fibres, bringing the mentioned advantages without extra expenses.



MAGNETIC EFFECT

These modes allow stone ablation while holding the target in place, without inducing stone retropulsion.



EASIER TREATMENT

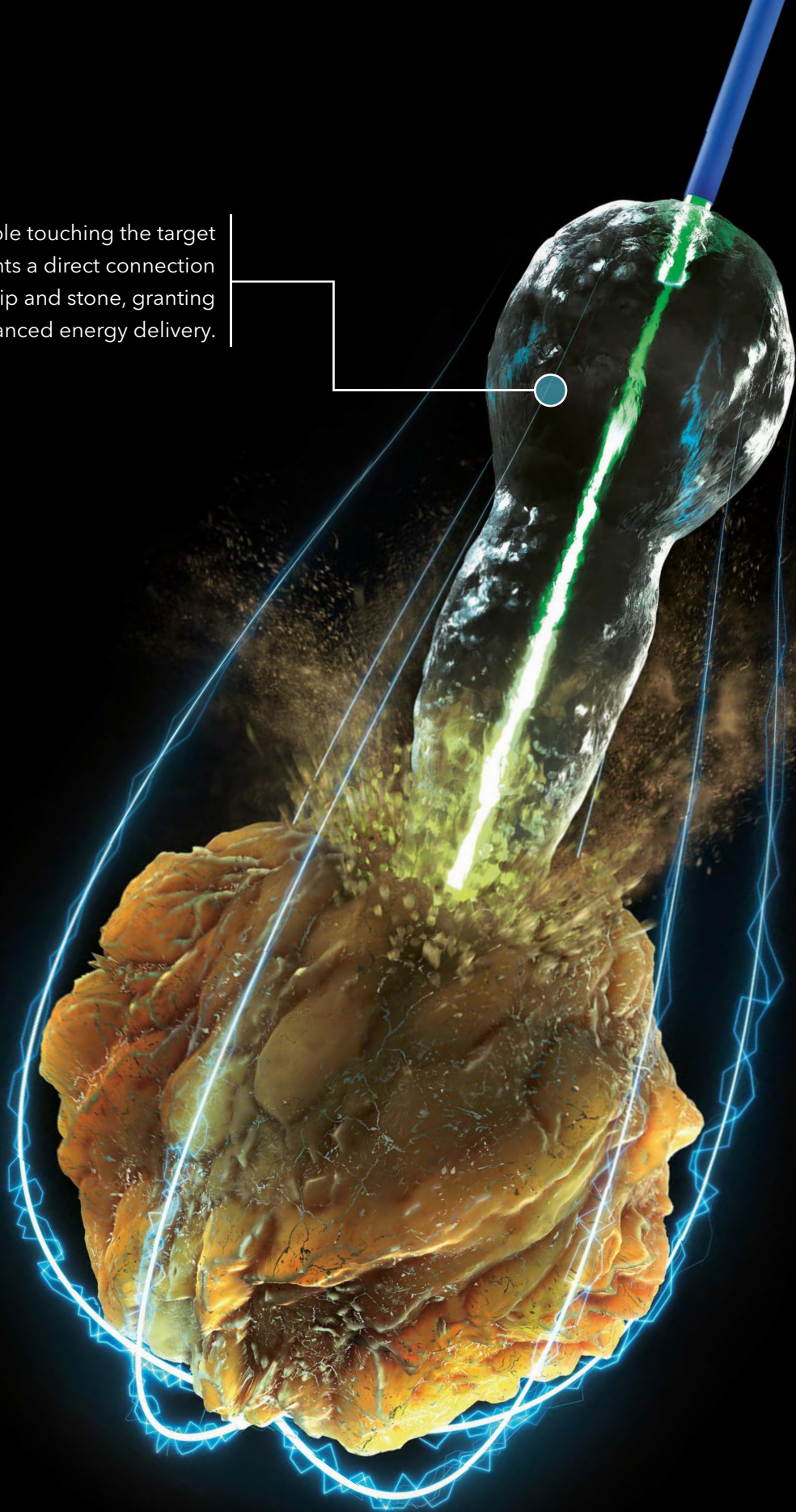
With a more stable target, lithotripsy treatment can proceed easily with fewer hassles.



TIME SAVING

Less stone retropulsion prevents the time-consuming fibre repositioning, whereas enhanced energy transmission increases the ablation rate.

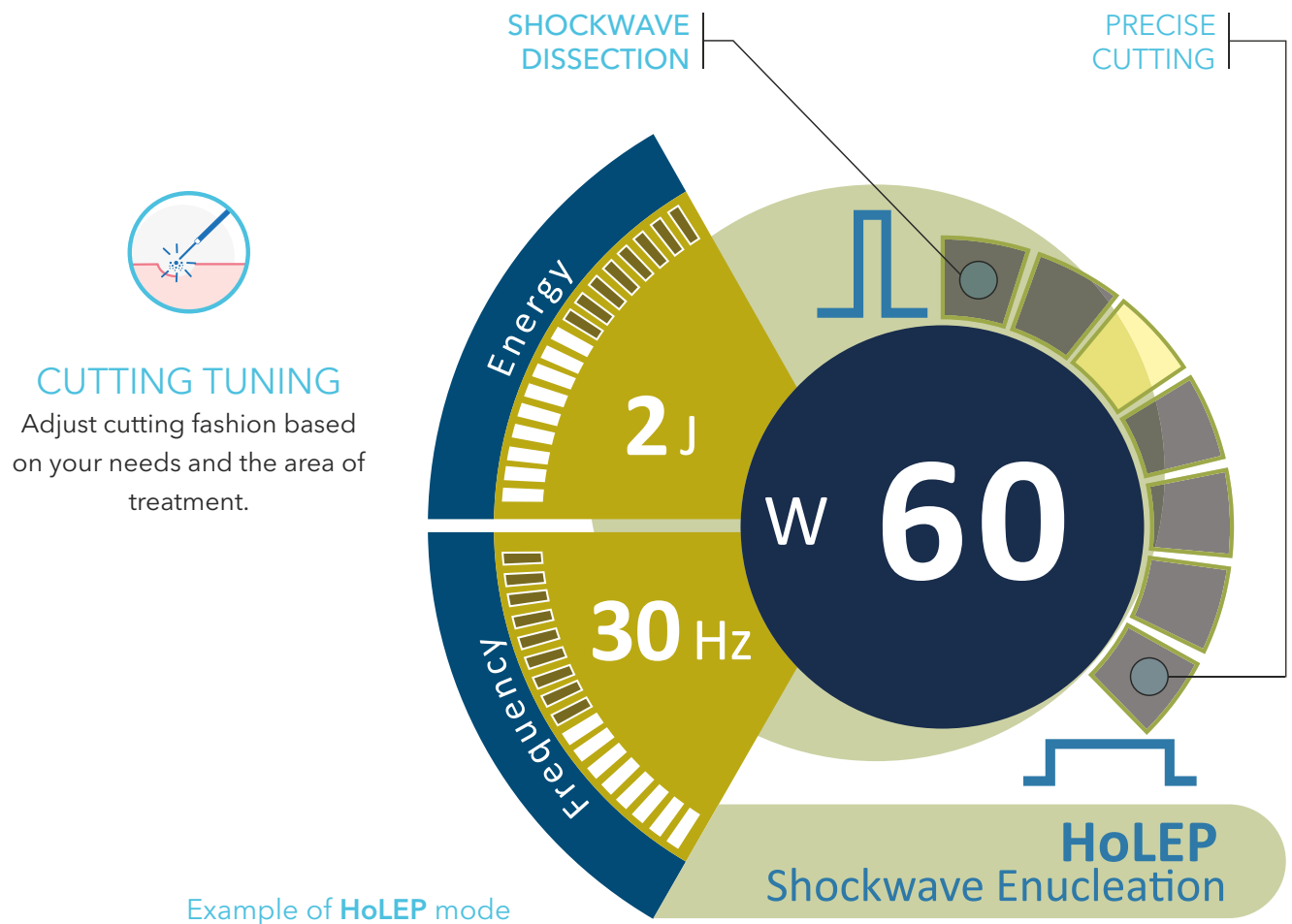
This long bubble touching the target represents a direct connection between fibre tip and stone, granting enhanced energy delivery.



As the pulse ends, the bubble collapses. The stone is dragged backwards together with the collapsing bubble (like a virtual basket).



MasterPulse



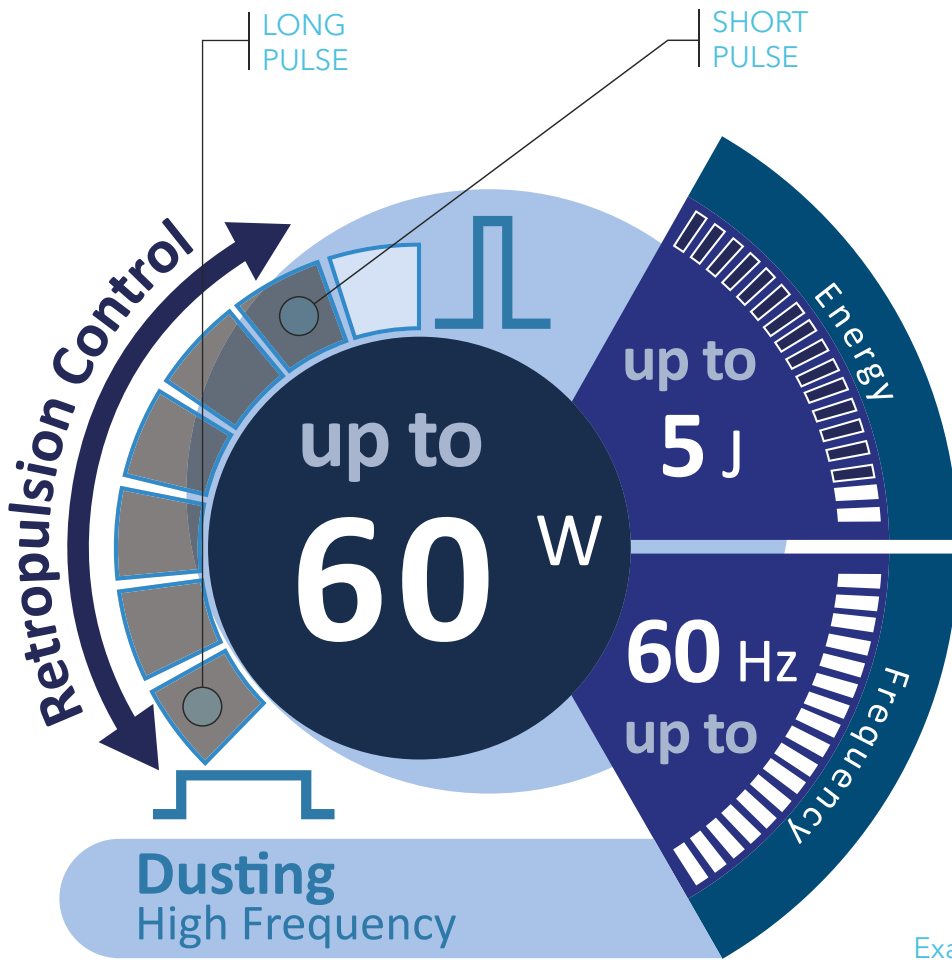
General Benefits

Reduce retropulsion and modify tissue cutting more easily: instead of trying multiple different settings, start with your preferred settings and then adjust the MasterPulse to tune the effect of laser emission based on your visual feedback. Regulation of pulse width has never been so easy!



EASE OF TREATMENT

Experience a more intuitive and different way to adjust laser settings, simply based on your visual feedback.



REDUCED STONE INSTABILITY
 Lower the stone instability step by step, by progressively increasing pulse width.

Example of **Lithotripsy** mode



CUTTING DOWN TREATMENT TIME
 Obtain the desired effect quickly, without losing time with the standard adjustment of energy and frequency parameters.



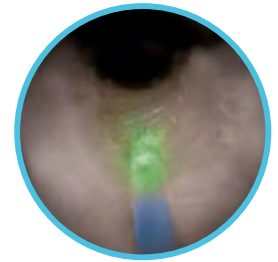
GREATER FLEXIBILITY
 7 levels of pulse width offer a greater flexibility compared to the traditional 3 levels offered by the other Holmium devices.

BPH

The large amount of literature demonstrates the efficacy and safety advantages of **HoLEP** (Holmium Laser Enucleation of the Prostate) with respect to traditional treatments available for BPH (Benign Prostatic Hyperplasia). Recent studies and trials have validated the excellent outcomes achieved by this technique, with its success being reproduced in a diverse array of patients.

Clinical evidences proved a 50 - 60 W Holmium output to work perfectly for an effective and gentle enucleation. HoLEP with Cyber Ho provides excellent results in terms of **long-term effectiveness, safety, haemostasis and fast recovery**. As alternative, the surgeon may use the side fibre to perform a HoLAP procedure for small prostatic adenomas,

- ✓ Precise cutting
- ✓ User preset saving
- ✓ Guided selection of settings
- ✓ Double footswitch



Starting 5 o'clock incision in HoLEP



Quick switch from one emission mode to another (e.g., from cutting to coagulation emission)



Delicate Areas Mode

Dedicated Coagulation Setting

User-friendly Software



GUIDED SELECTION

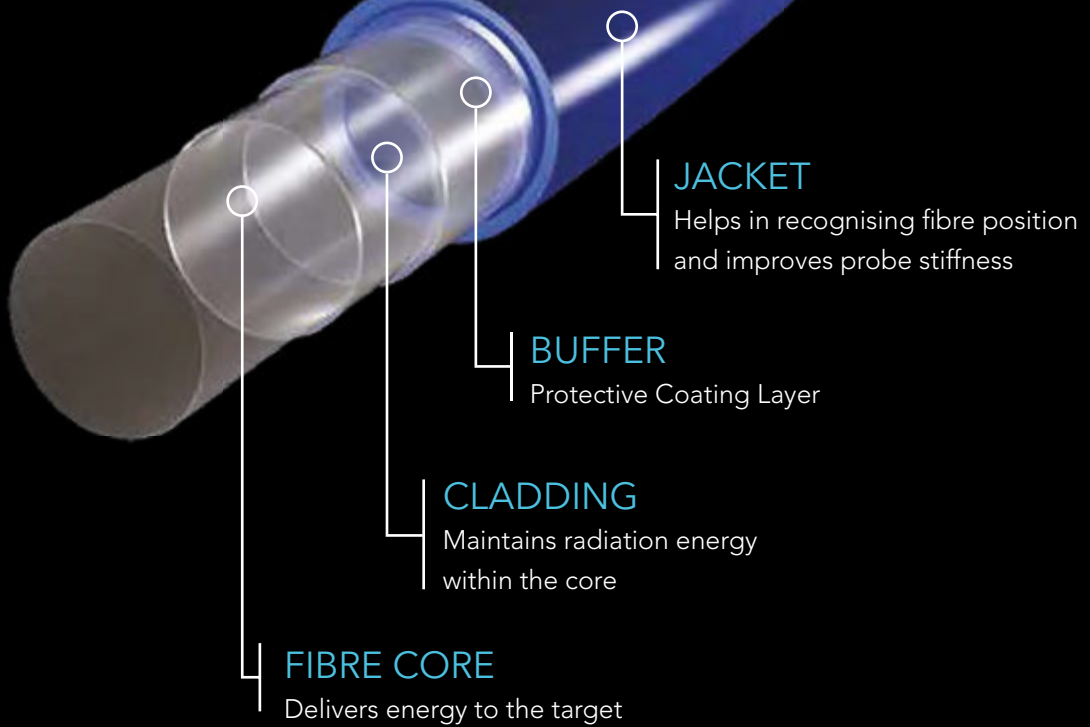
- BPH
- Lithotripsy
- Soft Tissues

SAVE AND LOAD SETTINGS



Fibres

The **Cyber Ho** device can be operated with a large range of fibres, depending on the application, flexibility and settings required.



STANDARD FIBRES

For general use in stone and soft tissue treatments



BALL-TIP FIBRES

Strongly simplify the insertion in already bent scopes.



SIDE FIBRES

The lateral emission is ideal for side tissue ablation, as in HoLAP



GASTRO FIBRES

Specifically designed for the fragmentation of gallstones



FIBRE RECOGNITION

Cyber Ho automatically adjusts emission settings based on the connected fibre diameter.



AVAILABLE DIAMETERS

200, 272, 365, 550, 600, 800 and 1000 μm



REUSABILITY

All fibres are available both as disposable and reusable (except ball-tip and side fibres).



CLEANING

Reusable fibres can be sterilised by Sterrad[®] and steam sterilisation

Sterrad is a registered trademark of ASP Global Manufacturing GmbH.

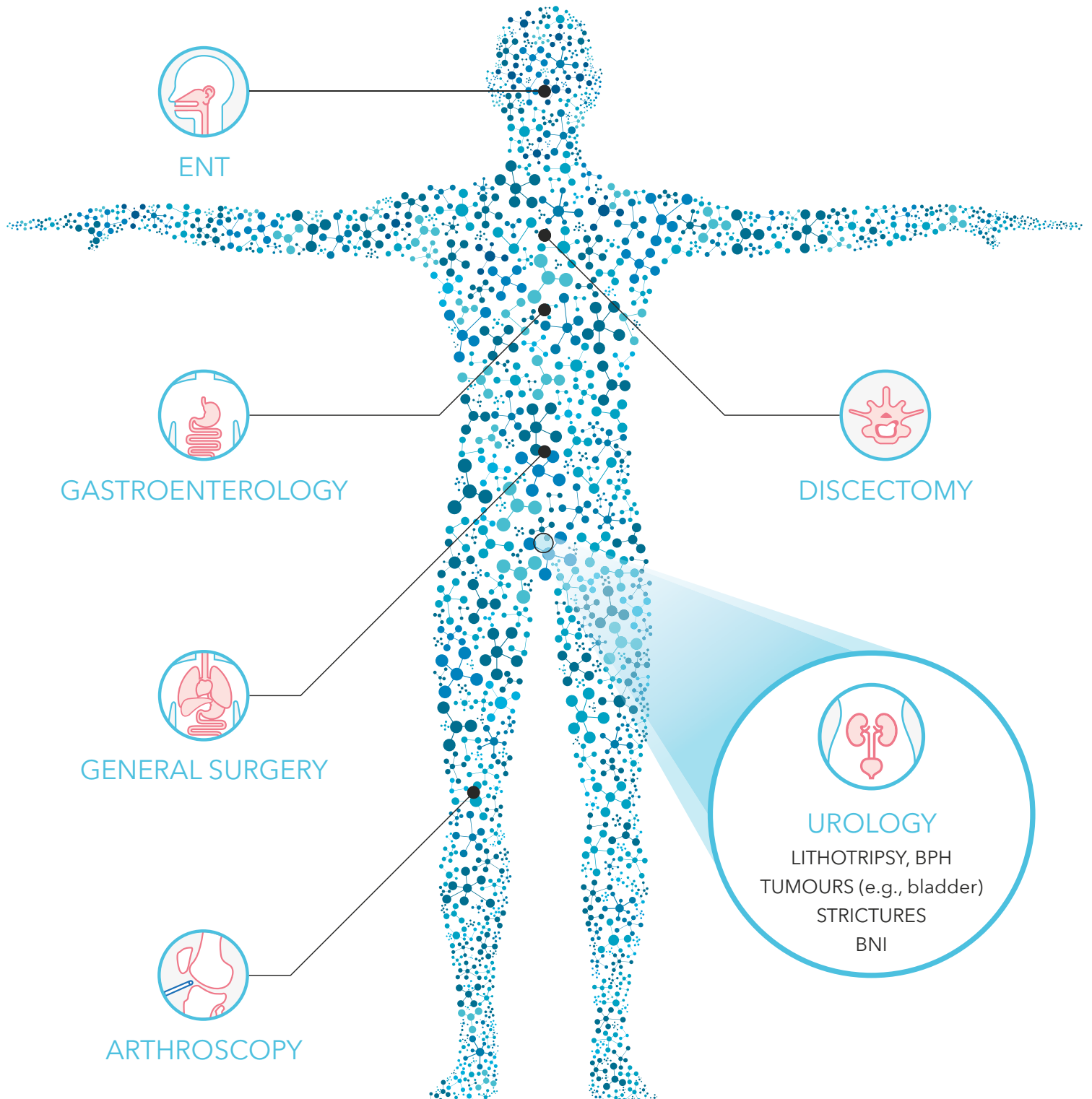


STERILISATION TRAY

A dedicated tray for sterilisation of fibres and tools

Applications

The **Cyber Ho 60** can be used to perform incision, excision, resection, ablation, vaporisation, coagulation and haemostasis of soft tissue and in lithotripsy of stones in various medical specialties, for example:



Technical Specifications

Wavelength	2.1 μm
Average power	Up to 60 W
Repetition rate	Up to 60 Hz
Energy per pulse	Up to 5 J
Pulse duration	50 - 1100 μs
Beam delivery	Wide range of flexible silica fibres
Aiming beam	532 nm (adjustable <5 mW) - Class 3R
Fibre recognition	RFID System
Activation	Double footswitch
Electrical requirements	200-230 Vac; 50/60 Hz; 5 kVA, single phase
Cooling	Internal chiller
Operating temperature	10°C - 30°C
Laser class	4
Dimensions and weight	52 cm (W) x 120 cm (D) x 123 cm (H) (monitor closed) - 200 kg

This brochure is not intended for the U.S. market.
Certain Intended Uses/Configurations/Models/Accessories are not cleared for U.S.

VISIBLE AND INVISIBLE LASER RADIATION

Avoid eye skin exposure to direct or scattered radiation
Laser product: Class 4
Aiming beam: Class 3R



Note: National local authorities may put restrictions to the parameters indicated in the table in the previous page, or may limit or remove certain intended uses. Specifications are subject to change without notice.

As stipulated in our partnership agreement, Cook Medical is only selling Quanta System lasers and fibres in the following European countries: Austria, France, Germany, Ireland, Switzerland, and the United Kingdom.

Quanta System products are manufactured according to the International standards and have been cleared by the most important International notified bodies.

The Company is UNI EN ISO 9001:2015 and EN ISO 13485:2016 certified. Quanta System S.p.A. was founded in 1985 and belongs to the El. En. Group (a public company listed in the Star segment of the Italian Stock Exchange) since January 2004.

The company, divided into three business units (medical, scientific and industrial) is specialized in manufacturing of laser and opto-electronic devices.

Quanta System
LASER IN OUR DNA

Distributed by

