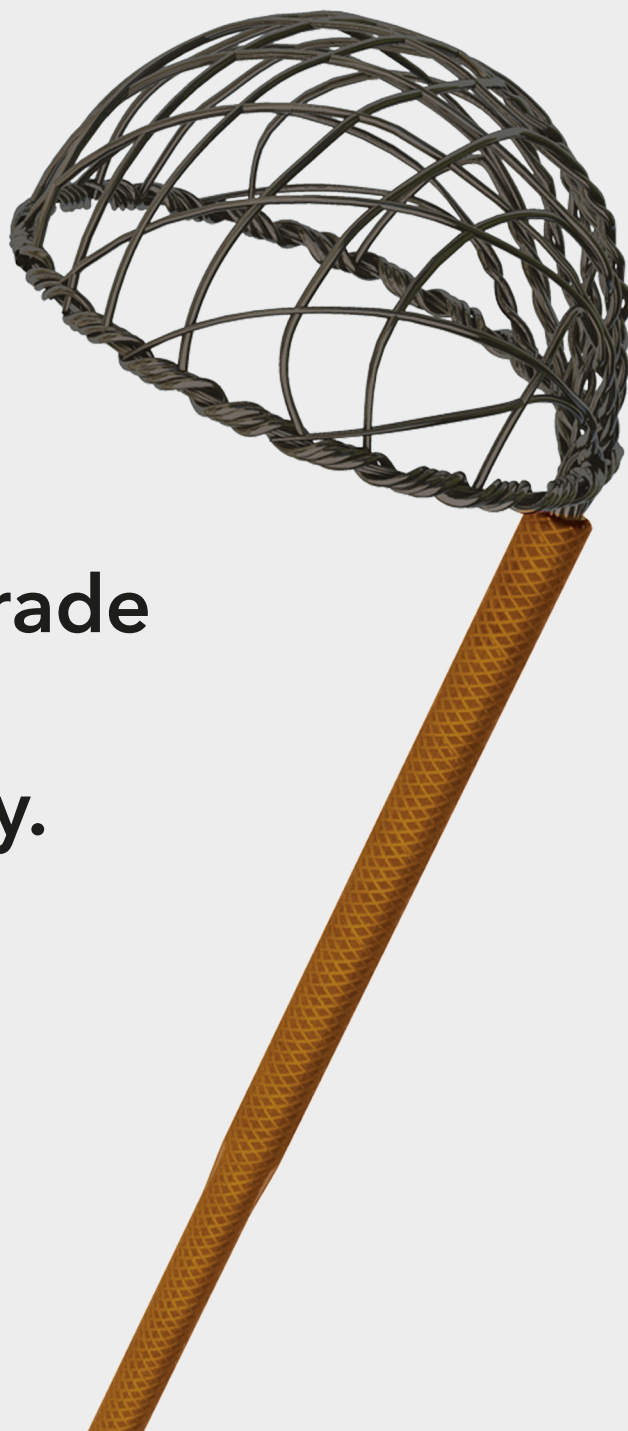


**Minimise retrograde
stone migration
during lithotripsy.**



NTrap[®]

STONE ENTRAPMENT AND EXTRACTION DEVICE



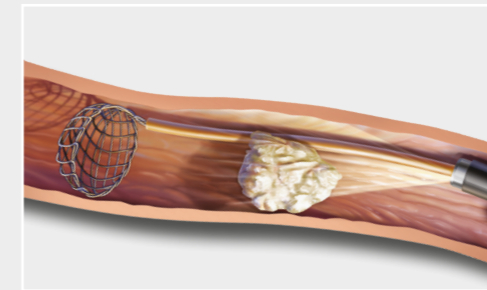
NTrap®

STONE ENTRAPMENT AND EXTRACTION DEVICE

When deployed in the ureter, the NTrap provides an occlusive basket that may keep stone fragments from moving up the ureter and into the kidney.

Features

Basket design	The intricately woven multiwire basket prevents the migration of fragments that are as small as 1.5 mm in diameter. ¹
Nitinol construction	The resilient shape-memory characteristics of the nitinol wire allow the basket to retain its shape after deployment.
Detachable handle	While the basket is deployed, the handle can be detached so that the scope can be withdrawn. Removing the scope from the working channel of the access sheath allows increased irrigation.



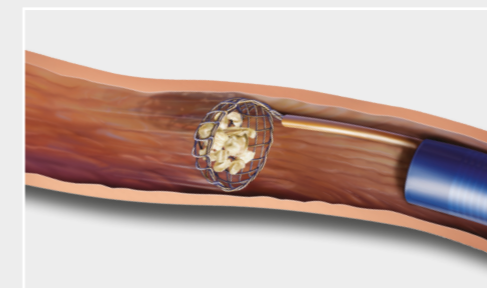
1. Using direct vision or fluoroscopic control, advance the NTrap sheath beyond the stone or foreign object. Deploy the basket by advancing the handle while holding the sheath in position.



2. Use an intracorporeal lithotripter to fragment the stone. To avoid damaging the NTrap device when you use laser or electrohydraulic lithotripsy, maintain a gap of at least 1 cm between the stone and the NTrap device. Avoid firing the laser directly on the NTrap.



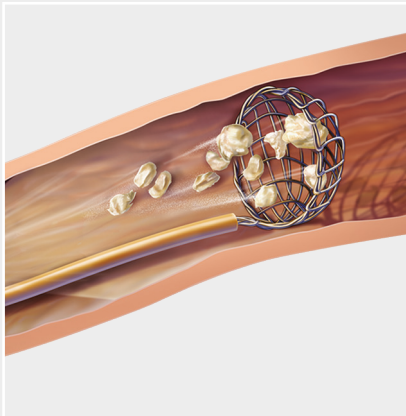
3. Use the basket to gather stone fragments and prevent fragments as small as 1.5 mm from migrating.¹



4. To complete the procedure, close the basket by advancing the sheath while holding the handle in position. Gently advance the basket to disengage stones that are too large for extraction.

1. Holley PG, Sharma SK, Perry KT, et al. Assessment of novel ureteral occlusion device and comparison with Stone Cone in prevention of stone fragment migration during lithotripsy. *J Endourol.* 2005;19(2):200-203.

1. Holley PG, Sharma SK, Perry KT, et al. Assessment of novel ureteral occlusion device and comparison with Stone Cone in prevention of stone fragment migration during lithotripsy. *J Endourol.* 2005;19(2):200-203.



NTrap®

STONE ENTRAPMENT AND EXTRACTION DEVICE

Used as an endoscopic entrapment and extraction device for calculi and other foreign bodies in the urinary tract, and to minimise stone migration during laser, ultrasonic, electrohydraulic, or pneumatic lithotripsy.

Order Number	Reference Part Number	Fr	Length cm	Basket Diameter mm
G32724	NTP-028145	2.8	145	7

Some products or part numbers may not be available in all markets. Contact your local Cook representative or Customer Support & Distribution for details. Please see product risk information in the IFU at cookmedical.eu.

Customer Service

EU website: cookmedical.eu
 EDI: cookmedical.eu/edi
 Distributors: +353 61239240, emea.distributors@cookmedical.com
 Austria: +43 179567121, oe.orders@cookmedical.com
 Belgium: +32 27001702, be.orders@cookmedical.com
 Denmark: +45 38487607, da.orders@cookmedical.com
 Finland: +358 972519996, fi.orders@cookmedical.com
 France: +33 171230269, fr.orders@cookmedical.com
 Germany: +49 21612723770, de.orders@cookmedical.com
 Hungary: +36 17779199, hu.orders@cookmedical.com
 Iceland: +354 8007615, is.orders@cookmedical.com
 Ireland: +353 61239252, ie.orders@cookmedical.com
 Italy: +39 0269682853, it.orders@cookmedical.com
 Netherlands: +31 202013367, nl.orders@cookmedical.com
 Poland: +48 223060159, pl.orders@cookmedical.com
 Spain: +34 912702691, es.orders@cookmedical.com
 Sweden: +46 858769468, se.orders@cookmedical.com
 Switzerland - French: +41 448009609, fr.orders@cookmedical.com
 Switzerland - Italian: +41 448009609, it.orders@cookmedical.com
 Switzerland - German: +41 448009609, de.orders@cookmedical.com
 United Kingdom: +44 2073654183, uk.orders@cookmedical.com

USA website: cookmedical.com

EDI: cookmedical.com/edi.do

Americas:

Phone: +1 812.339.2235, 800.457.4500, Fax: 800.554.8335

Email: customersupport@cookmedical.com

Australia:

Phone: +61 734346000, 1800777222, Fax: +61 734346001, 1800077283

Email: cau.custserv@cookmedical.com



CC, URO-A4